

LOC I-FRJ 111.3	APCH CRS 177°	Rwy Idg 11,100 TDZE 1267 Arpt Elev 1291
---------------------------	-------------------------	--

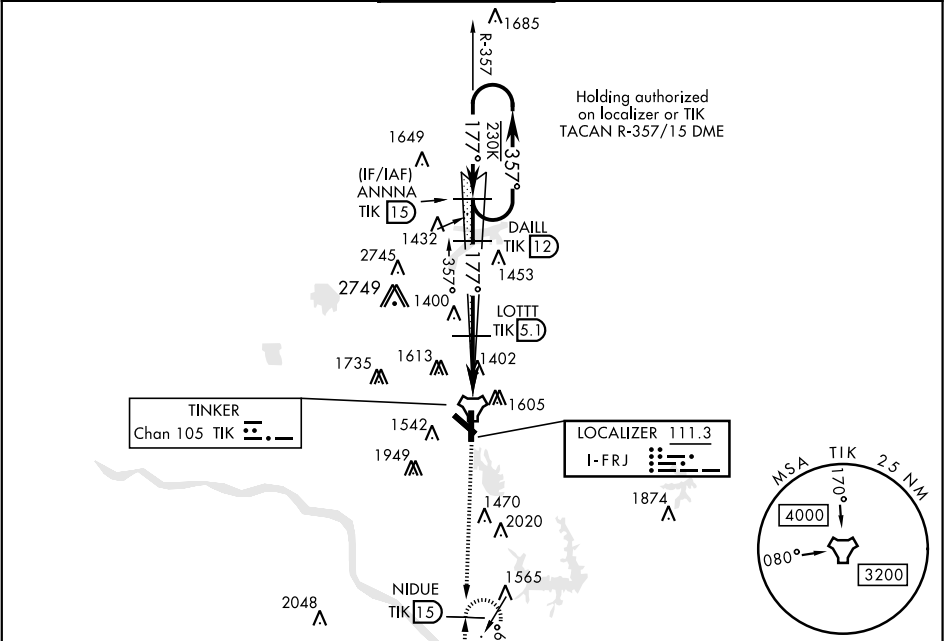
AL-299 [USAF]

ILS or LOC/DME Z RWY 18

TINKER AFB (KTIK)

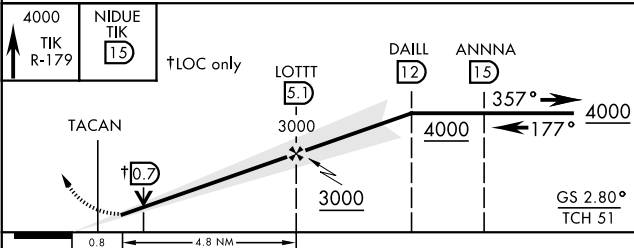
▼ * When ALS inop, increase all CAT to 55 and vis to 1 mile. ** CAT E Circling NA in sector S of Rwy 13-31 and W of Rwy 18-36. Circling NA to Rwy 18.		SALS 	MISSED APPROACH: Climb to 4000 on TIK TACAN R-179 to NIDUE and hold.
---	--	----------	--

ATIS ★ 270.1	OKE CITY APP CON 124.2 336.4	TINKER TOWER 124.45 251.05	GND CON 121.8 275.8	CLNC DEL 119.7 335.8	ASR
------------------------	--	--------------------------------------	-------------------------------	--------------------------------	-----

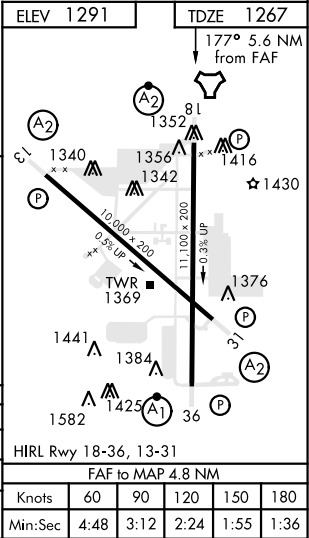


Localizer unusable from TIK 0.1 DME to rwy threshold.
Localizer NA beyond 15° right of course

EMERG SAFE ALT 100 NM 4700 FROM TIK



CATEGORY	A	B	C	D	E
S-ILS 18		1467/40	200 (200-3/4)		
S-LOC 18 *		1640/40	373 (400-3/4)		
CIRCLING **	1900-1 609 (700-1)		1960-1 3/4 669 (700-1 3/4)	1960-2 669 (700-2)	1960-2 1/4 669 (700-2 1/4)



ILS or LOC/DME Z RWY 18

SC-1, 31 DEC 2021 to 28 JAN 2021

SC-1, 31 DEC 2021 to 28 JAN 2021