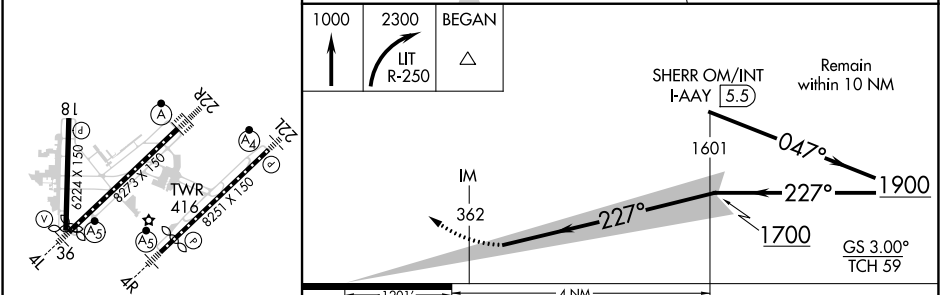
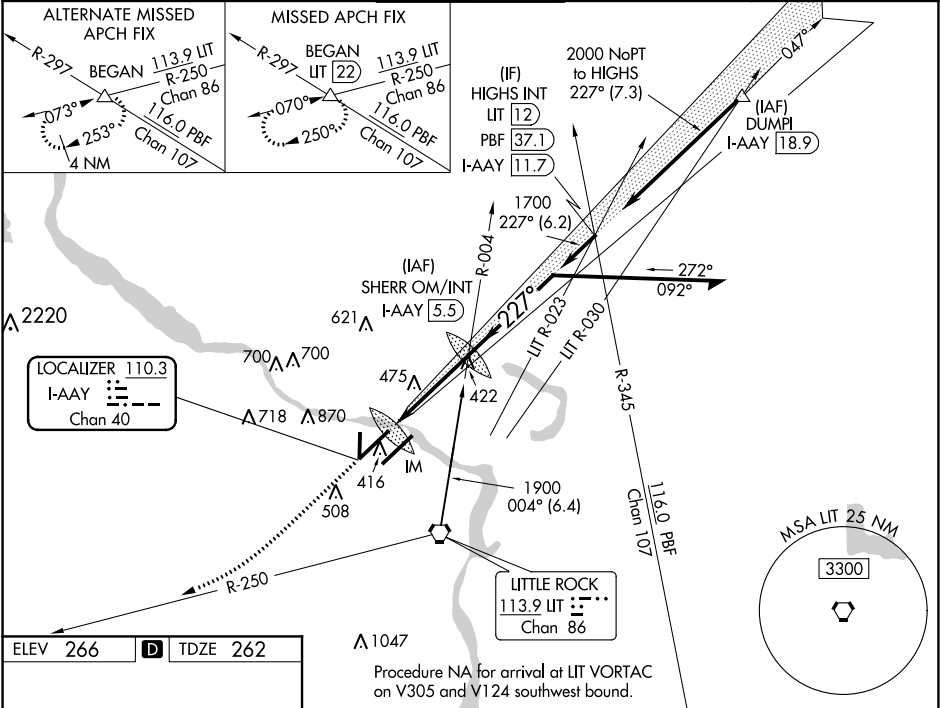


LOC/DME I-AAY	APP CRS	Rwy Idg	8273
<b>110.3</b>	<b>227°</b>	TDZE	<b>262</b>
Chan <b>40</b>		Apt Elev	<b>266</b>

**ILS RWY 22R (SA CAT I)**  
**BILL AND HILLARY CLINTON NATIONAL/ADAMS FIELD (LIT)**

DME required.	ALSIF-2	MISSED APPROACH: Climb to 1000 then climbing right turn to 2300 on UT VORTAC R-250 to BEGAN INT/LIT 22 DME and hold.
<p>Simultaneous approach authorized with Rwy 22L. Requires specific OPSPEC, MSPEC, or LOA approval and use of HUD to DA.</p>		

D-ATIS	LITTLE ROCK APP CON	ADAMS TOWER	GND CON	CLNC DEL
<b>125.65</b>	<b>135.4 353.6</b>	<b>118.7 257.8</b>	<b>121.9 339.8</b>	<b>118.95</b>



CATEGORY	A	B	C	D
S-ILS-22R	RA 182/14 150 DA 412			

**SA CATEGORY I ILS - SPECIAL AIRCREW & AIRCRAFT CERTIFICATION REQUIRED**

TDZ/CL Rwy 22R  
MIRL Rwy 18-36  
HIRL Rws 4R-22L and 4L-22R

SC-1, 31 DEC 2020 to 28 JAN 2021

SC-1, 31 DEC 2020 to 28 JAN 2021