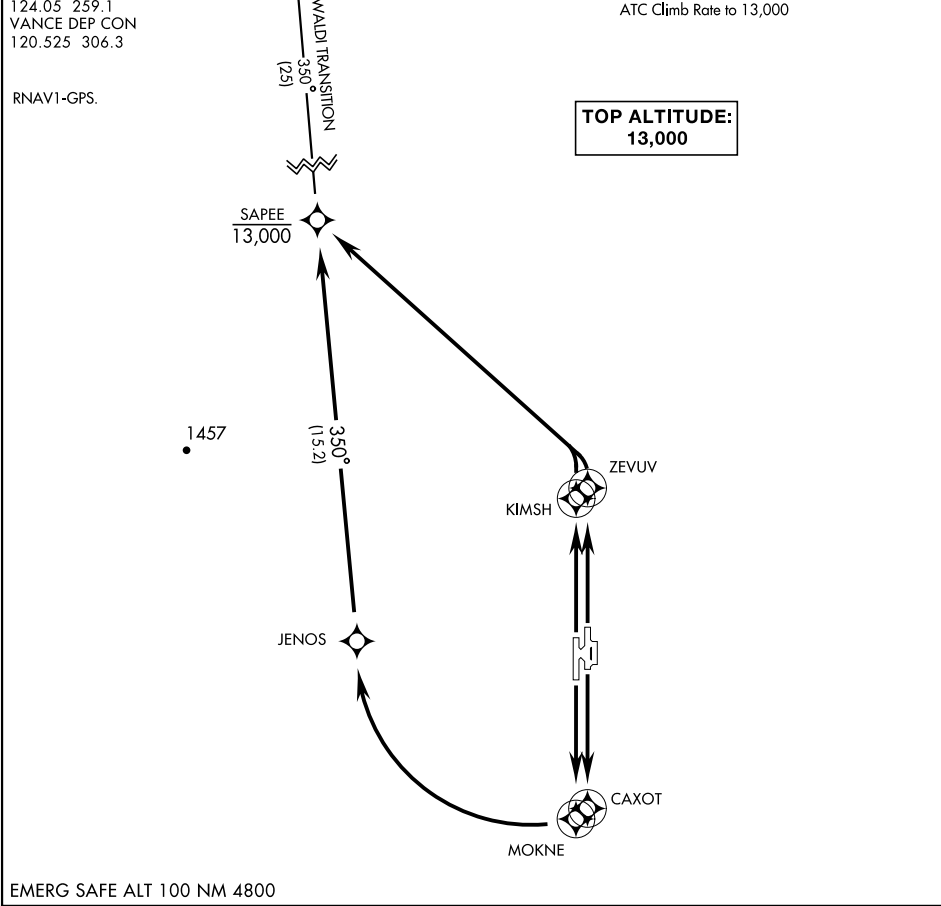


ATIS★115.4 263.15		SL-135 [USAF]									
CLNC DEL		WALDI		Rwy	Knots	60	120	180	240	300	360
225.4		13,000		17R	V/V(fpm)	228	456	684	912	1140	1368
GND CON				17C	V/V(fpm)	229	458	687	916	1145	1374
121.8 289.4				35L	V/V(fpm)	282	564	846	1128	1410	1692
VANCE TOWER★				35C	V/V(fpm)	283	566	849	1132	1415	1698
124.05 259.1				ATC Climb Rate to 13,000							
VANCE DEP CON											
120.525 306.3											



DEPARTURE ROUTE DESCRIPTION

TAKE-OFF RWY 17C: Climb direct CAXOT, then right turn direct JENOS, then climbing track 350° to cross SAPEE at or below 13,000.

TAKE-OFF RWY 17R: Climb direct MOKNE, then right turn direct JENOS, then climbing track 350° to cross SAPEE at or below 13,000.

TAKE-OFF RWY 35L: Climb direct KIMSH, then climbing left turn direct to cross SAPEE at or below 13,000.

TAKE-OFF RWY 35C: Climb direct ZEVUV, then climbing left turn direct to cross SAPEE at or below 13,000.

WALDI TRANSITION (SAPEE1.WALDI): From over SAPEE climbing track 350° to cross WALDI at 13,000.

SC-1, 31 DEC 2020 to 28 JAN 2021

SC-1, 31 DEC 2020 to 28 JAN 2021