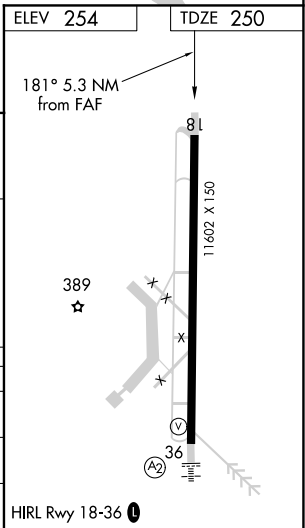
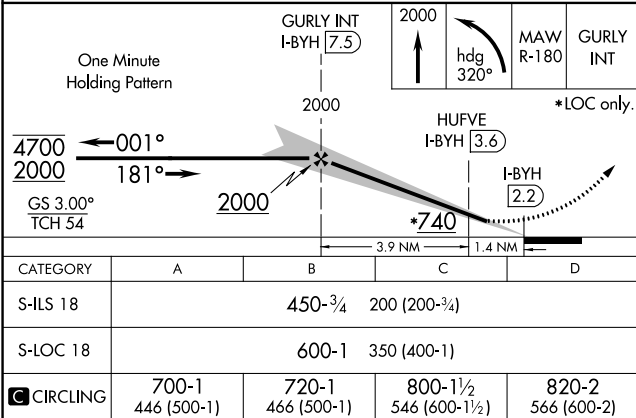
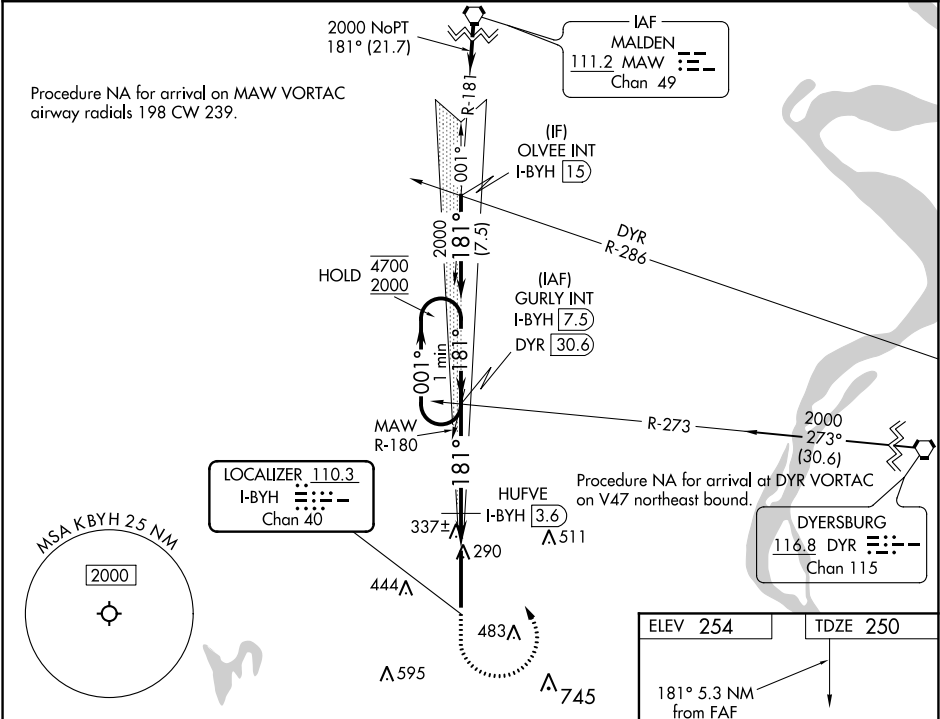


LOC/DME I-BYH 110.3 Chan 40	APP CRS 181°	Rwy Idg 11602 TDZE 250 Apt Elev 254
---	------------------------	--

ILS or LOC RWY 18
ARKANSAS INTL (BYH)

DME required for LOC only. DME required for DYR VORTAC to GURLY transition.	MISSED APPROACH: Climb to 2000, then left turn heading 320° and MAW VORTAC R-180 to GURLY INT and hold.
--	---

MEMPHIS CENTER 134.65 316.15	UNICOM 122.7 (CTAF) 0
--	---------------------------------



SC-1, 31 DEC 2020 to 28 JAN 2021

SC-1, 31 DEC 2020 to 28 JAN 2021