

LOC I-AIW	APP CRS	Rwy Idg	9002
108.9	309°	TDZE	733
		Apt Elev	777

ILS or LOC RWY 31

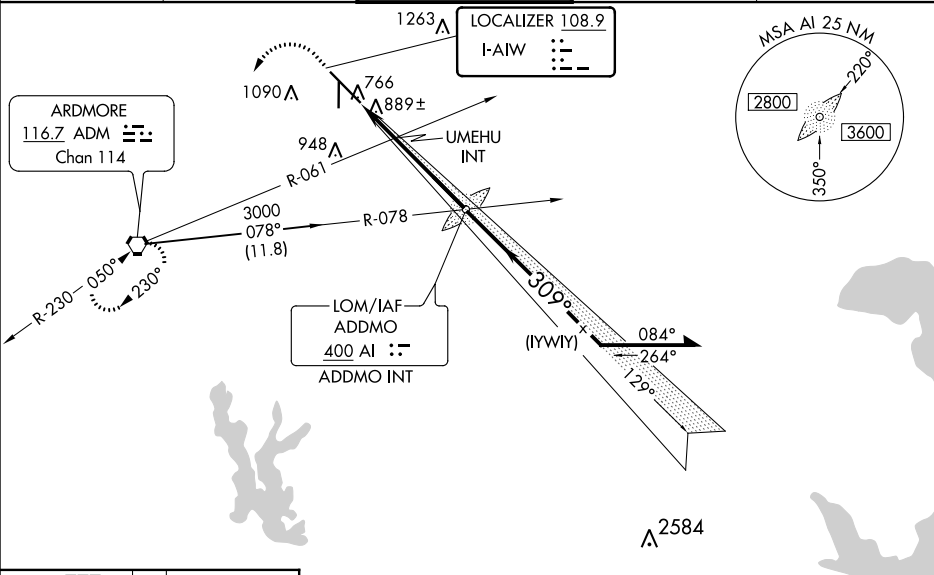
ARDMORE MUNI (ADM)

⚠ Autopilot coupled approach NA below 1360. When local altimeter setting not received, use Ardmore Downtown Executive altimeter setting: increase DA to 1026 feet; increase all MDAs 40 feet; increase Circling Cats C and D visibilities ¼ SM. Inop table does not apply to S-ILS 31 all Cats, S-LOC 31 Cats A and B; UMEHU FIX MINIMUMS S-LOC 31 Cats A and B. When using Ardmore Downtown Executive altimeter setting, inop table does not apply to S-ILS 31 all Cats, S-LOC 31 Cats A and B; UMEHU FIX MINIMUMS S-LOC 31 Cats A and B. For inop ALS, increase UMEHU FIX MINIMUMS S-LOC 31 Cats C and D visibility to 1½ SM. When using Ardmore Downtown Executive altimeter setting, for inop ALS, increase UMEHU FIX MINIMUMS Cats C and D visibility to 1¾ SM. Circling Rwy 13, 35 NA at night. Rwy 13, 35 helicopter visibility reduction below 1 SM NA. Rwy 31 helicopter visibility reduction below ¾ SM NA.

MALS

MISSED APPROACH: Climb to 2000 then dimbing left turn to 3000 direct ADM VORTAC and hold.

ATIS	FORT WORTH CENTER	ARDMORE TOWER ★	GND CON	UNICOM
125.6	124.75 323.0	118.5 (CTAF) 257.7	121.8	122.95



ELEV 777

TDZE 733

2000

3000

ADM

† 1320 when using Ardmore Downtown Executive altimeter setting.
* LOC only.

UMEHU INT

AI LOM/INT 6000

Remain within 10 NM

2520

129°

309°

3000

2600

GS 3.00°

TCH 49

1.8 NM

3.6 NM

CATEGORY	A	B	C	D
S-ILS 31	991-1		258 (300-1)	
S-LOC 31	1280-1	547 (600-1)	1280-1½	547 (600-1½)
CIRCLING	1380-1	603 (700-1)	1440-1¾	1440-2
			663 (700-1¾)	663 (700-2)
UMEHU FIX MINIMUMS (DUAL VOR RECEIVERS REQUIRED)				
S-LOC 31	1140-1		407 (400-1)	
CIRCLING	1380-1	603 (700-1)	1380-1¾	1440-2
			603 (700-1¾)	663 (700-2)

HIRL Rwy 13-31

MIRL Rwy 17-35

FAF to MAP 5.4 NM

Knots	60	90	120	150	180
Min:Sec	5:24	3:36	2:42	2:10	1:48