

APP CRS	Rwy Idg	5752
213°	TDZE	11
	Apt Elev	11

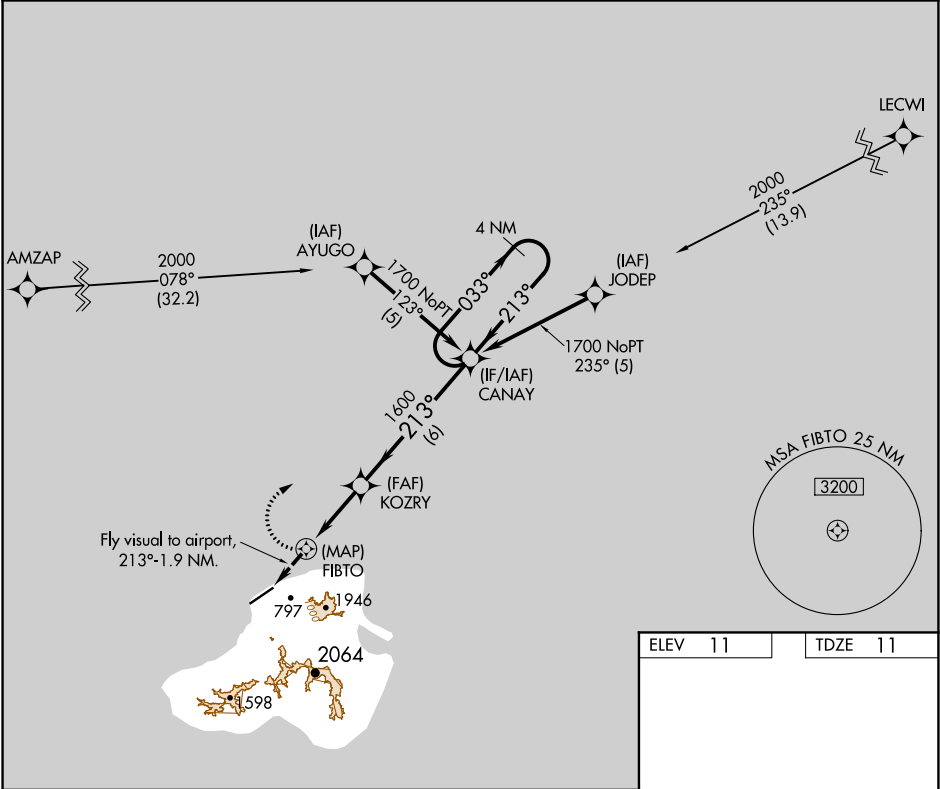
RNAV (GPS) RWY 23

KOSRAE (TTK)(PTSA)

Circling not authorized southeast of Rwy 5-23. Obtain local altimeter setting on CTAF; when not received, procedure not authorized. DME/DME RNP-0.3 NA. No controlled airspace below 5500.

MISSED APPROACH: Climbing right turn to 1700 direct CANAY WP and hold.

KOSRAE RADIO
123.6 (CTAF) 0



ELEV 11

TDZE 11

MIRL Rwy 5-23 0
REIL Rwy 5 and 23 0

<div><div><div>1700</div><div>CANAY</div></div><div><div>Fly visual to airport, 213°-1.9 NM.</div><div><div><div></div><div></div><div></div><div></div></div></div></div></div>		<div><div><div>KOZRY</div><div><div>≤3.00°</div><div>TCH 50</div></div></div><div><div>213°</div><div>1600</div></div></div>		<div><div><div>CANAY</div><div>4 NM Holding Pattern</div></div><div><div>033°</div><div>←213°</div><div>1700</div></div></div>	
<div><div><div>1.9 NM</div><div>3 NM</div><div>6 NM</div></div></div>					
CATEGORY	A	B	C	D	
LNNAV MDA	800-2	789 (800-2)	800-2¼ 789 (800-2¼)	800-2½ 789 (800-2½)	
CIRCLING	800-2	789 (800-2)	800-2¼ 789 (800-2¼)	800-2½ 789 (800-2½)	

PAC, 31 DEC 2020 to 25 FEB 2021

PAC, 31 DEC 2020 to 25 FEB 2021