

|         |          |      |
|---------|----------|------|
| APP CRS | Rwy Idg  | 7000 |
| 093°    | TDZE     | 594  |
|         | Apt Elev | 607  |

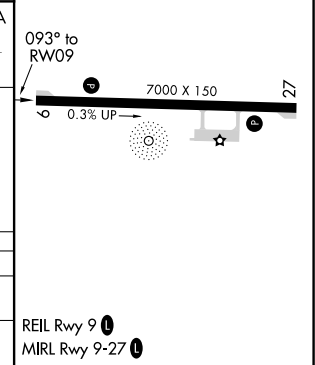
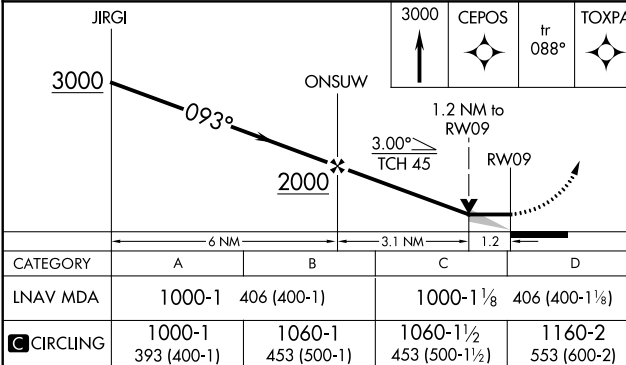
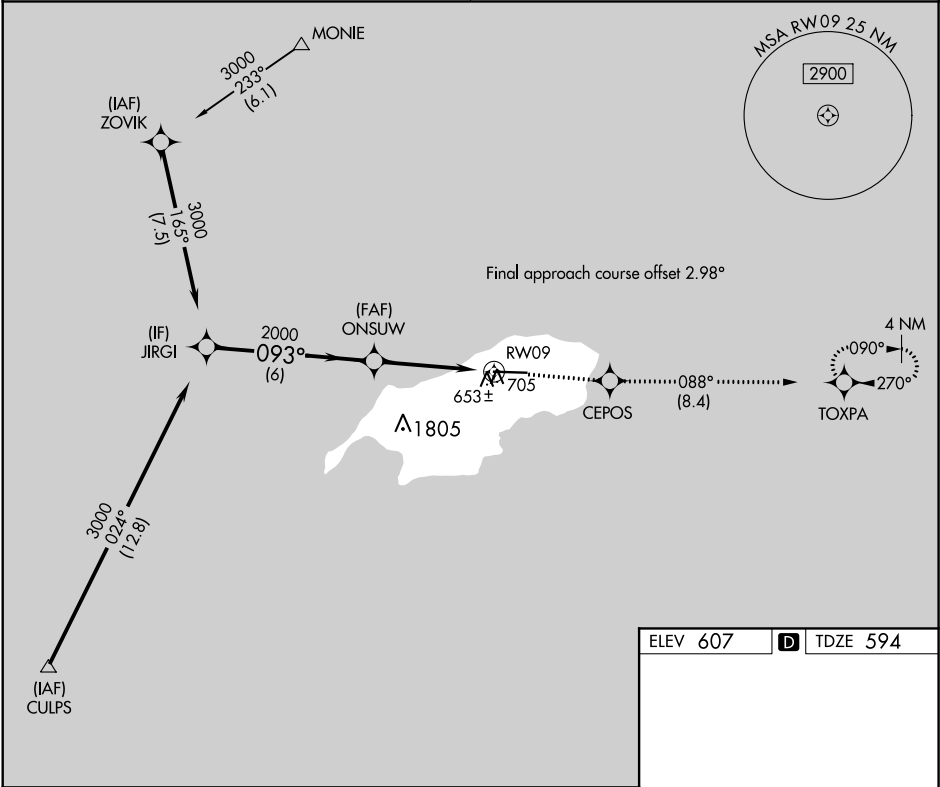
RNAV (GPS) RWY 9

BENJAMIN TAISACAN MANGLONA INTL (GRO)(PGRO)

**⚠** Circling NA south of Rwy 9-27. DME/DME RNP-0.3 NA. When local altimeter setting not received, use Andersen AFB altimeter setting and increase all MDA 320 feet, increase LNAV Cat C, D visibility 7/8 mile, Circling Cat C, D visibility 3/4 mile. VDP NA when using Andersen AFB altimeter setting.

**MISSED APPROACH:** Climb to 3000 direct CEPOS and on track 088° to TOXPA and hold.

|                            |               |
|----------------------------|---------------|
| GUAM CENTER<br>120.5 263.0 | CTAF<br>123.6 |
|----------------------------|---------------|



RNAV (GPS) RWY 9

PAC, 31 DEC 2020 to 25 FEB 2021

PAC, 31 DEC 2020 to 25 FEB 2021