

NDB SN <b><u>312</u></b>	APP CRS <b>246°</b>	Rwy Idg TDZE Apt Elev	<b>8700</b> <b>210</b> <b>215</b>
-----------------------------	------------------------	-----------------------------	---

NDB RWY 25

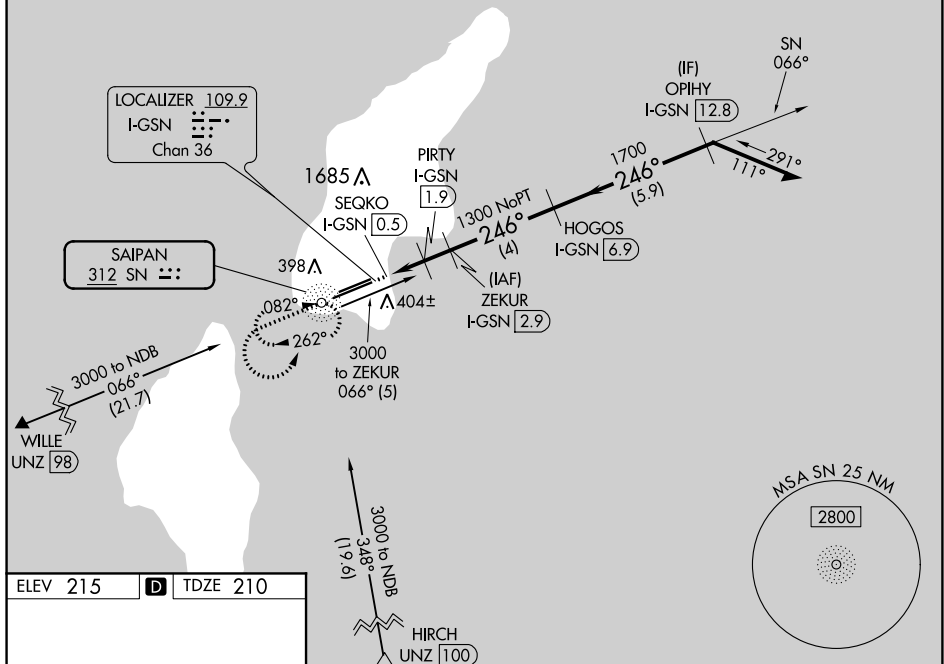
FRANCISCO C ADA/SAIPAN INTL (GSN)(PGSN)

**T** Circling NA north of Rwy 6-24.  
Rwy 25 helicopter visibility reduction below  $\frac{3}{4}$  SM NA.  
DME required.

**MISSED APPROACH:** Climb to 2000 then climbing left turn to 2800 direct SN NDB and hold.

ATIS <b>127.2</b>	GUAM APP CON <b>118.4 290.5</b>	SAIPAN TOWER <b>125.7 256.9</b>	GND CON <b>121.8</b>
----------------------	------------------------------------	------------------------------------	-------------------------

## DME REQUIRED



246° 3.1 NM from FAF

311 7001 X 100 8700 X 200

246° 2.4 NM

3000 2600 1300 1700 980

ZEKUR I-GSN [2.9] 066° 246° 2600

PIRTY I-GSN [1.9] HOGOS I-GSN [6.9] OPIHY I-GSN [12.8]

SEQKO I-GSN [0.5] 3.27° TCH 60

0.6 1 NM 4 NM 5.9 NM

CATEGORY	A	B	C	D
S-25	720-1 510 (600-1)	720-1 510 (600-1)	720-1 510 (600-1)	720-1 510 (600-1)
CIRCLING	720-1 505 (600-1)	720-1 505 (600-1)	720-1 505 (600-1)	720-1 505 (600-1)

REIL Rwy 25  
HIRL Rwy 7-25 and 6-24

REIL Rwy 25  
HIRL Rwy 7-25 and 6-24

SAIPAN ISLAND, CQ

Amdt 3A 03JAN19

FRANCISCO C ADA/SAIPAN INTL (GSN)(PGSN)

15°07'N-145°44'E

NDB RWY 25