

APP CRS	Rwy Idg	6600
083°	TDZE	9
	Apt Elev	9

RNAV (RNP) Z RWY 9

POHNPEI INTL (PNI)(PTPN)

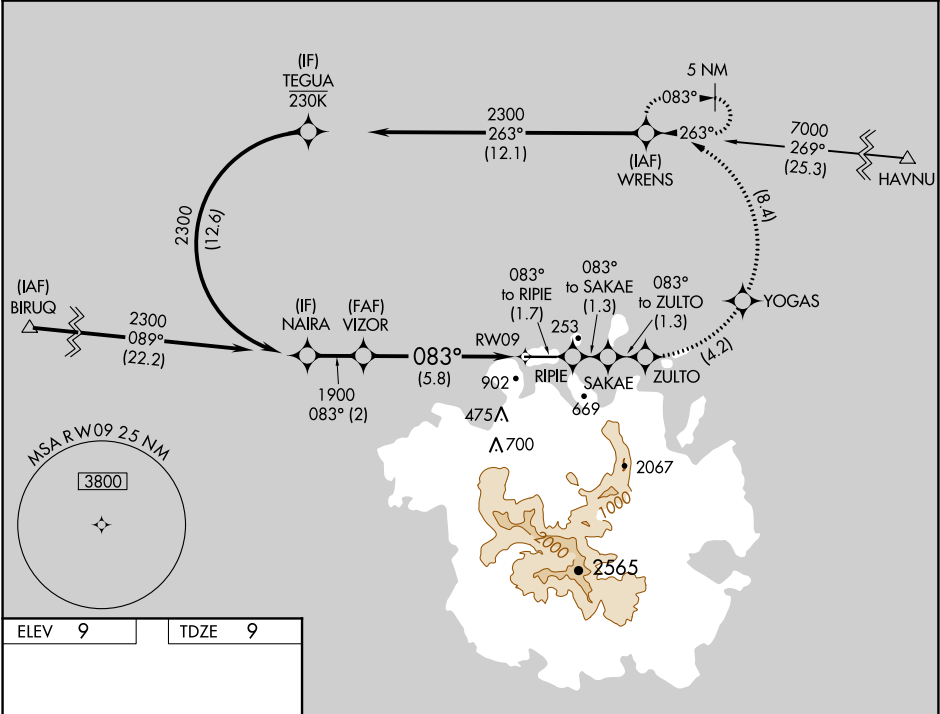
▼

Obtain local altimeter setting on CTAF; when not received, procedure NA. For uncompensated Baro-VNAV systems, procedure NA below 20°C (68°F) or above 54°C (130°F). Missed approach requires RNP less than 1.0. RF required. GPS required. No controlled airspace below 5500 feet.

MISSED APPROACH: (Do not exceed 230K until WRENS) Climb to 2300 on the RNAV missed approach route to WRENS and hold.

POHNPEI RADIO

123.6 (CTAF) 0



ELEV 9

TDZE 9

083° to RWY09

6600 X 150

Z

MIRL Rwy 9-27 0

REIL Rwys 9 and 27

2300

RIPIE

SAKAE

ZULTO

YOGAS

WRENS

tr 083°

tr 083°

tr 083°

tr 083°

tr 083°

tr 083°

VIZOR

1900

1900

083°

RWY09

GP 3.00°

TCH 50

5.8 NM

Procedure

Turn

NA

See planview for multiple IF locations.

CATEGORY	A	B	C	D
RNP 0.15 DA	259-1 250 (300-1)			

AUTHORIZATION REQUIRED