

| | | |
|---------|----------|------|
| APP CRS | Rwy Idg | 6600 |
| 083° | TDZE | 9 |
| | Apt Elev | 9 |

RNAV (RNP) Y RWY 9

POHNPEI INTL (PNI)(PTPN)

▼

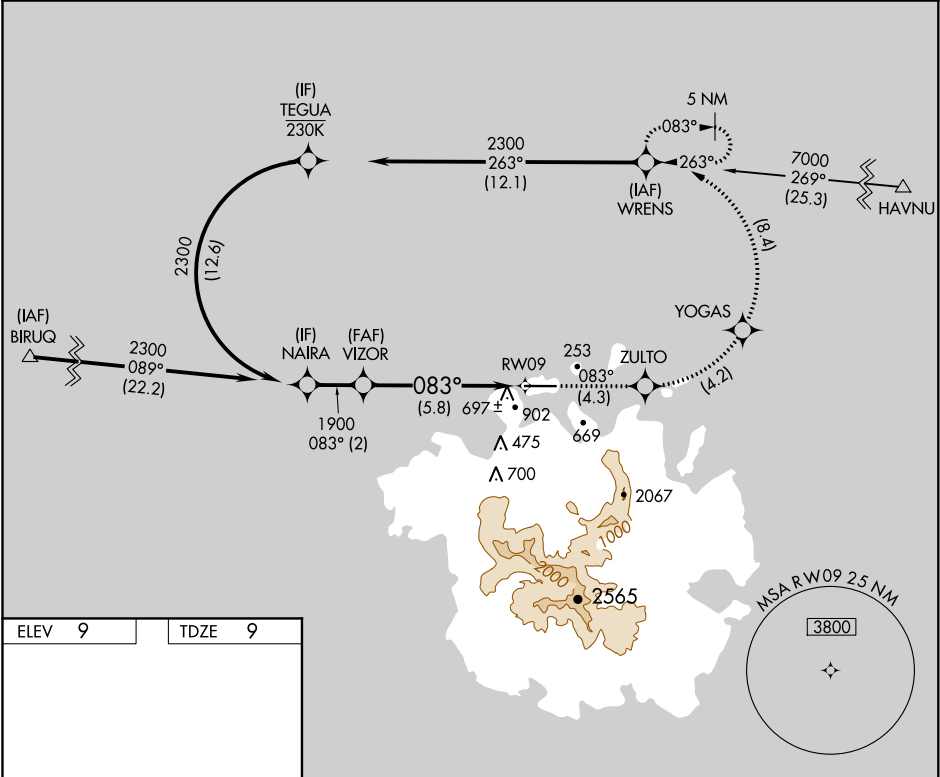
▲

Obtain local altimeter setting on CTAF; when not received, procedure NA.
For uncompensated Baro-VNAV systems, procedure NA below 20°C (68°F) or above 54°C (130°F). Missed approach requires RNP less than 1.0.
RF required. GPS required. No controlled airspace below 5500 feet.

MISSED APPROACH: (Do not exceed 230K until WRENS) Climb to 2300 on the RNAV missed approach route to WRENS and hold.

POHNPEI RADIO

123.6 (CTAF) 0



ELEV 9

TDZE 9

083° to RW09

6600 X 150

⊖

⊕

☆

MIRL Rwy 9-27 0

REIL Rwys 9 and 27

VIZOR

1900

Procedure Turn NA

2300

tr 083°

ZULTO

YOGAS

WRENS

See planview for multiple IF locations.

1900

083°

GP 3.00°

TCH 50

5.8 NM

RW09

| | | | | |
|-------------|--------------------|---|---|---|
| CATEGORY | A | B | C | D |
| RNP 0.30 DA | 912-4 903 (1000-4) | | | |

AUTHORIZATION REQUIRED