

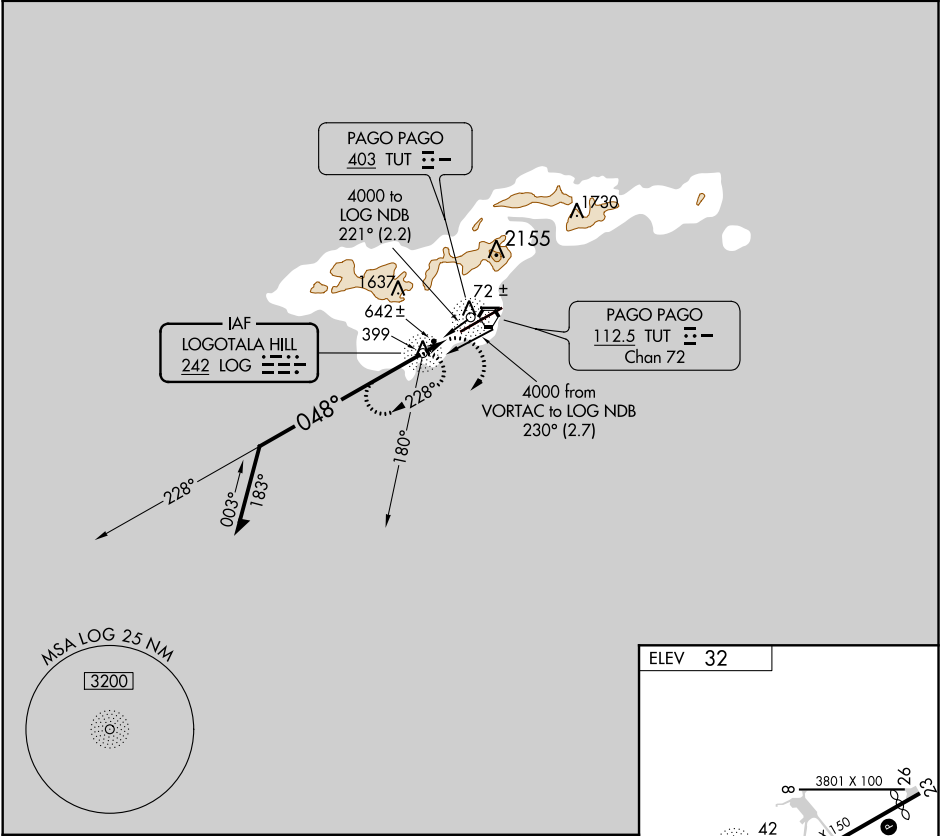
NDB LOG 242	APP CRS 048°	Rwy Idg TDZE Apt Elev	N/A N/A 32
-----------------------	------------------------	-----------------------------	-------------------------

NDB-C

PAGO PAGO INTL (PPG) (NSTU)

▼ ▲	Circling NA northwest of Rwy 5-23. When local altimeter setting not received, procedure NA.	MISSED APPROACH: Climbing right turn to 4000 via 180° bearing from LOG NDB then direct LOG NDB and hold.
----------------------	--	--

AWOS-3PT 127.925	FALEOLO APP CON 118.1 6.553(HF)	CTAF 122.9	118.3 0
----------------------------	---	----------------------	----------------



<p>Remain within 10 NM</p> <p>2500</p> <p>228°</p> <p>048°</p> <p>1100</p> <p>LOG NDB</p> <p>Maintain 3200 or above until established outbound for procedure turn.</p> <p>1 NM</p> <p>0.8 NM</p>				<p>4000</p> <p>LOG</p> <p>180°</p>	<p>ELEV 32</p> <p>3801 X 100</p> <p>42</p> <p>10001 X 150</p> <p>101 ±</p> <p>45</p> <p>0.4% DOWN</p> <p>048° 1.8 NM from FAF</p> <p>HIRL Rws 5-23 and 8-26 0</p>			
CATEGORY	A	B	C	D	FAF to MAP 1 NM			
CIRCLING	760-1	728 (800-1)	760-2	760-2 1/4	Knots	60	90	120
			728 (800-2)	728 (800-2 1/4)	Min:Sec	1:00	0:40	0:30
						0:24	0:20	

NDB-C