

NDB/DME TTK <u>375</u> Chan 111 (116.4)	APP CRS 054°	Rwy Idg 6013 TDZE 10 Apt Elev 10
---	------------------------	---

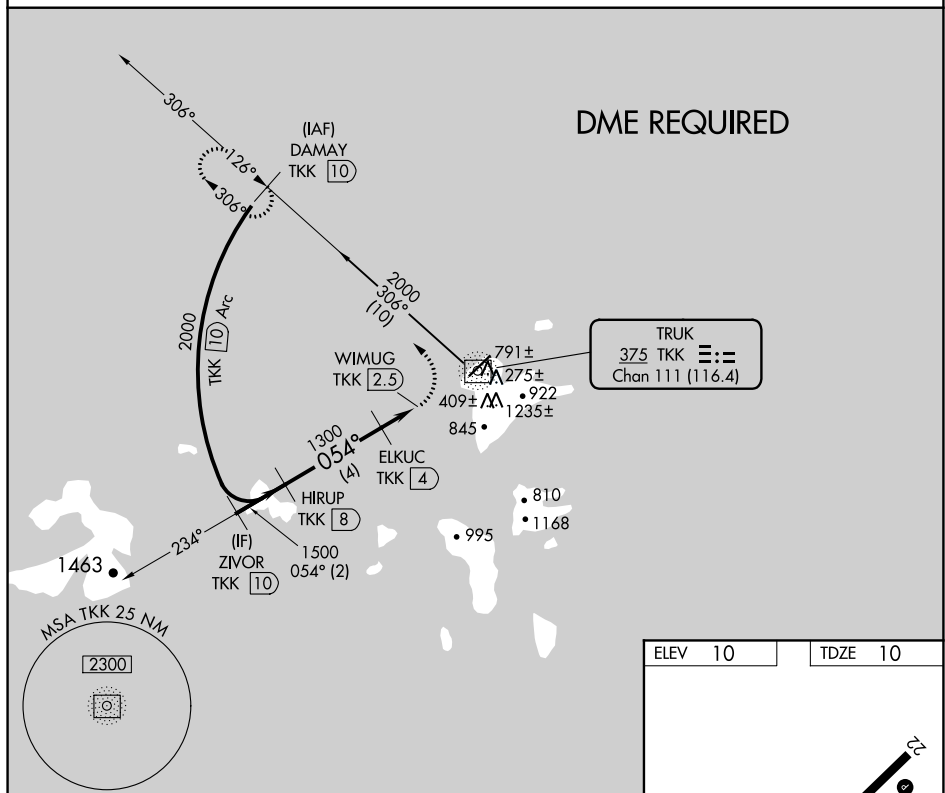
NDB RWY 4

CHUUK INTL (TKK) (PTKK)

- T** Obtain local altimeter setting on CTAF; when not received, procedure NA.
A Circling NA southeast of Rwy 4-22. DME required.
 No controlled airspace below 5500.

MISSED APPROACH: Climbing left turn to 2000 on TTK NDB/DME bearing 306° to DAMAY/TKK 10 DME and hold.

TRUK RADIO
123.6 MHz (CTAF)



ELEV 10

TDZE 10

3.7 NM from FAF

54°

1.50 NM

MIRA 4-22

REIL Rws 4 and 22

ZIVOR
TKK (10)

HIRUP
TKK (8)

ELKUC
TKK (4)

WIMUG
TKK (2.5)

TKK
NDB/DME

2000
TKK 306°

DAMAY
TKK (10)

2000
0.54°
1500

1300
3.18°
TCH 51

2 NM
4 NM
1.5 NM
2.2 NM

CATEGORY	A	B	C	D
S-4	2000-2100	2100-2200	2200-2300	2300-2400

CIRCLING

2000
TKK 306°

DAMAY
TKK (10)

2000
0.54°
1500

1300
3.18°
TCH 51

2 NM
4 NM
1.5 NM
2.2 NM

CATEGORY	A	B	C	D
S-4	2000-2100	2100-2200	2200-2300	2300-2400

CIRCLING