

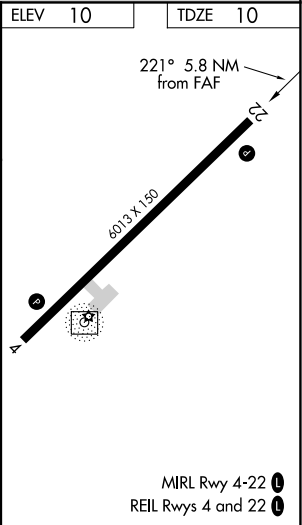
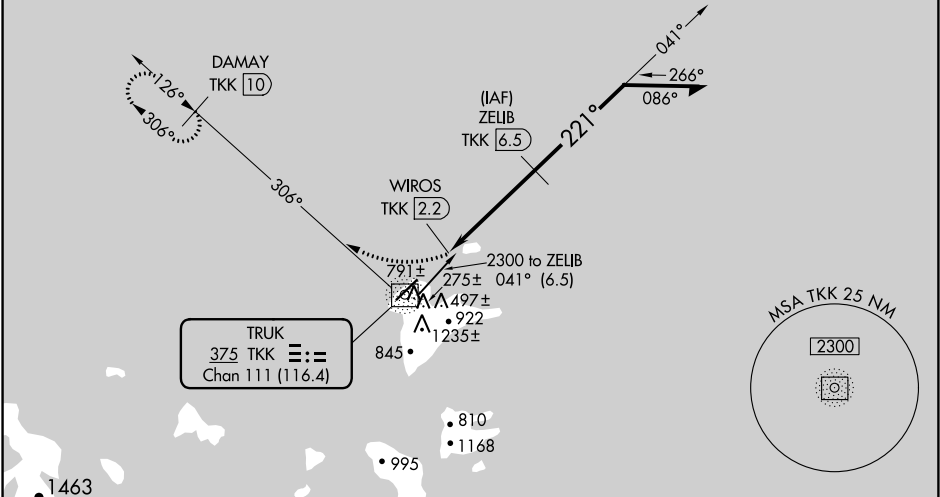
NDB/DME	TKK	APP CRS	Rwy Idg	6013
Chan	111 (116.4)	221°	TDZE	10
			Apt Elev	10

NDB RWY 22
CHUUK INTL (TKK) (PTKK)

- ⚠** Obtain local altimeter setting on CTAF; when not received, procedure NA.
⚠ Circling NA southeast of Rwy 4-22. DME Required.
No controlled airspace below 5500.
- MISSED APPROACH:** Climbing right turn to 2000 on BRG-306 from TKK NDB/DME to DAMAY/TKK 10 DME and hold.

TRUK RADIO
123.6 0 (CTAF)

DME REQUIRED



2000	DAMAY	ZELIB	Remain within 10 NM	
TKK 306°	TKK 10	TKK 6.5		
TKK NDB/DME	WAIROS			
	TKK 2.2			
		≤ 3.00°		
		TCH 50		
		1900		
CATEGORY	A	B	C	D
S-22	800-1¾	790 (800-1¾)	800-2½	790 (800-2½)
CIRCLING	800-1¾	790 (800-1¾)	800-2½	790 (800-2½)