

APP CRS	Rwy Idg	12015
243°	TDZE	305
	Apt Elev	305

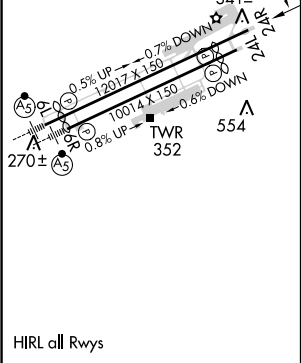
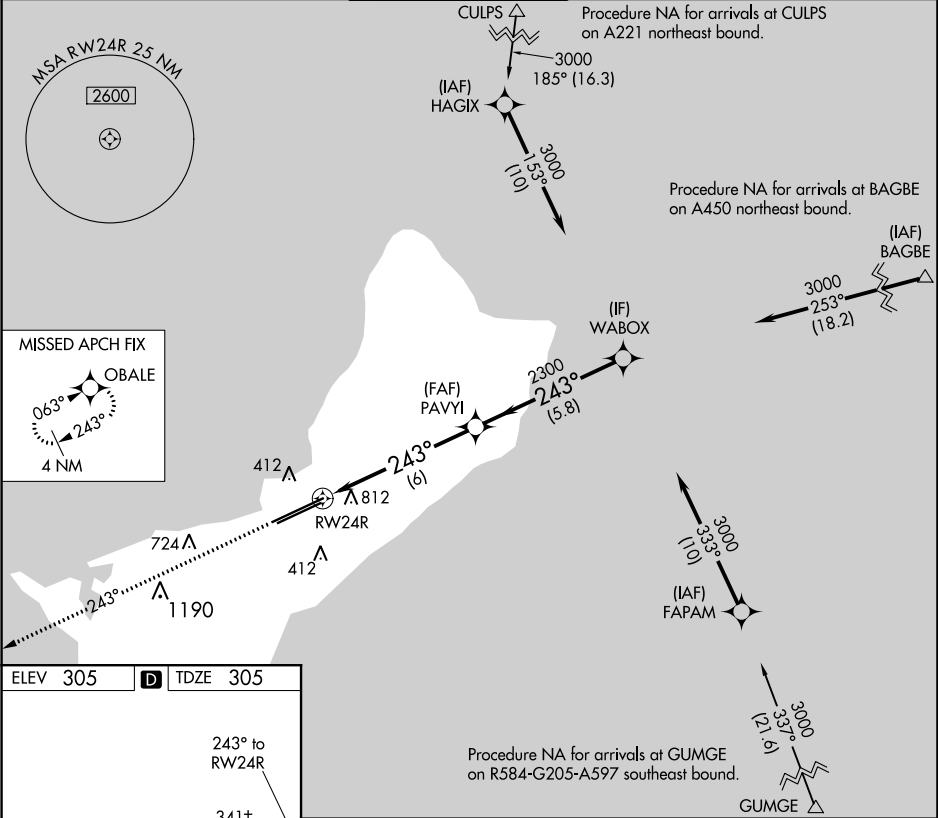
RNAV (RNP) Z RWY 24R



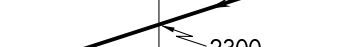
GUAM INTL (GUM)(PGUM)

GPS required. For uncompensated Baro-VNAV systems, procedure NA below 22°C (72°F) or above 52°C (127°F).

MISSED APPROACH: Climb to 3000 on track 243° to OBALE and hold.

ATIS 119.0	GUAM CERAP 119.8 269.0	AGANA TOWER 118.1 340.2	GND CON 121.9 336.4	CLNC DEL 121.9
---------------	---------------------------	----------------------------	------------------------	-------------------



3000		OBALE			
					
tr 243°					
		PAVYI		WABOX	
		2300		3000	
					
		2300			
		6 NM		5.8 NM	
				GP 3.00° TCH 75	
CATEGORY	A	B	C	D	
RNP 0.24 DA	1014-2½		709 (800-2½)		
RNP 0.30 DA	1072-2½		767 (800-2½)		
AUTHORIZATION REQUIRED					