

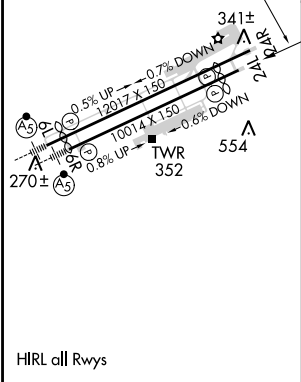
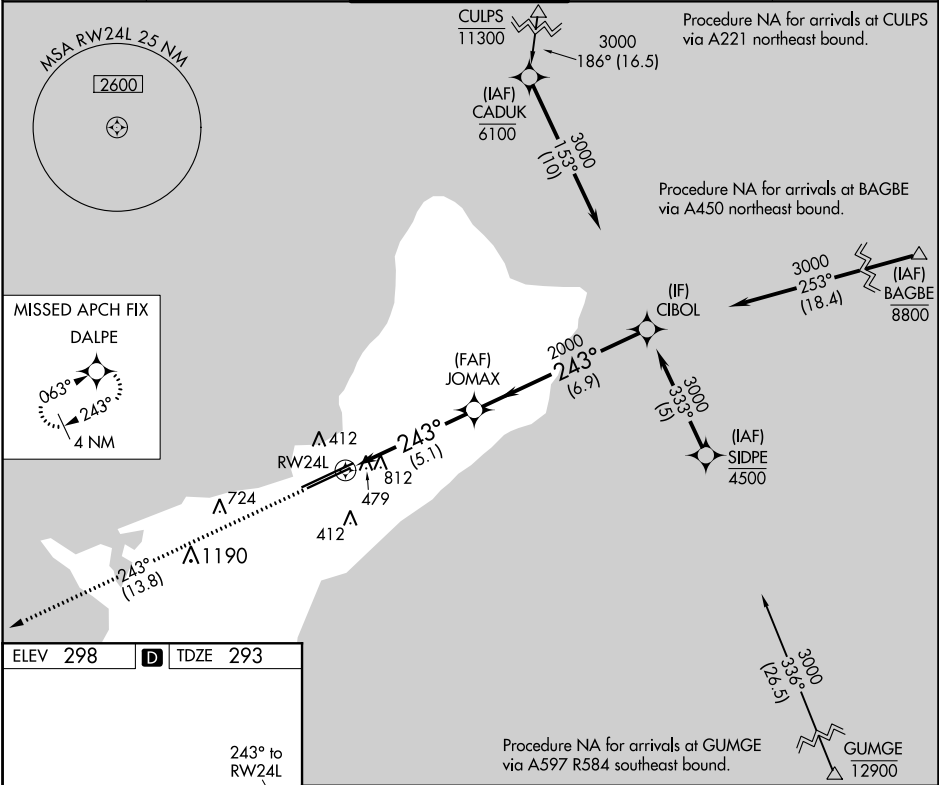
APP CRS	Rwy Idg	9010
243°	TDZE	293
	Apf Elev	298


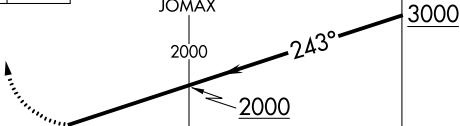
RNAV (RNP) Z RWY 24L

GUAM INTL (GUM)(PGUM)

	For uncompensated Baro-VNAV systems, procedure NA below 19°C (66°F) or above 48°C (119°F). GPS required. Procedure NA at night.	MISSED APPROACH: Climb to 3000 via track 243° to DALPE and hold.
--	---	--

ATIS	GUAM CERAP	AGANA TOWER	GND CON	CLNC DEL
119.0	119.8 269.0	118.1 340.2	121.9 336.4	121.9



3000 ↑ tr 243°	DALPE 	VGSI and RNAV glidepath not coincident (VGSI Angle 3.00/TCH 75).			Procedure Turn NA
					GP 3.00° TCH 55
		5.1 NM	6.9 NM		
CATEGORY	A	B	C	D	
RNP 0.20 DA	1103-2¾ 810 (900-2¾)				
RNP 0.30 DA	1140-3 847 (900-3)				
AUTHORIZATION REQUIRED					

PAC, 31 DEC 2020 to 25 FEB 2021

PAC, 31 DEC 2020 to 25 FEB 2021