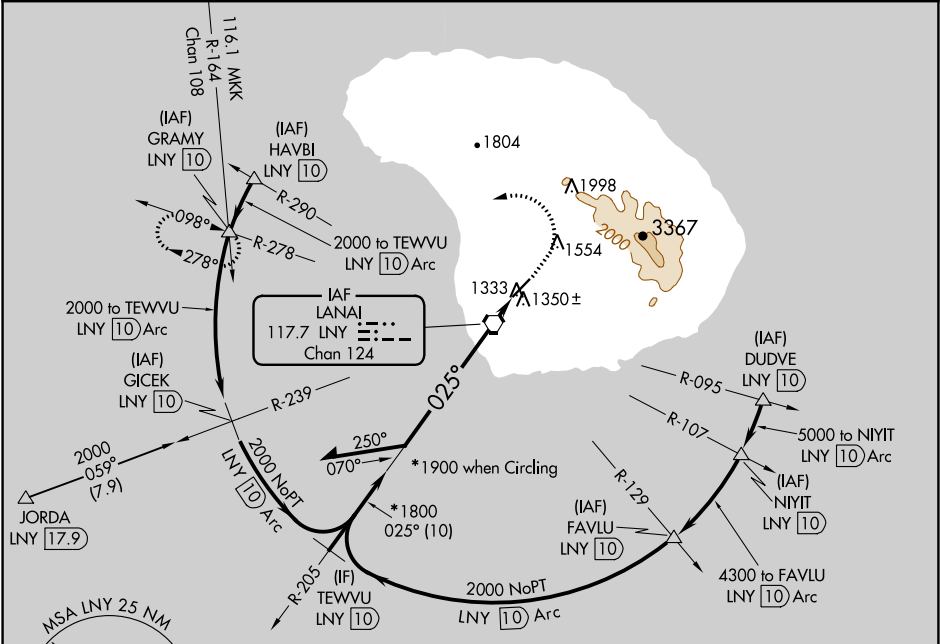


VORTAC LNY 117.7 Chan 124	APP CRS 025°	Rwy Idg TDZE Apt Elev 5000 1307 1308
---	------------------------	--

VOR or TACAN RWY 3
LANAI (LNY)(PHNY)

▼ Circling Rwy 21 NA at night.	MISSED APPROACH: Climb to 1720 then climbing left turn to 3300 via heading 240° and LNY VORTAC R-278 to GRAMY INT/LNY 10 DME and hold.
---------------------------------------	--

AWOS-3P 118.375	HCF CENTER 119.3 307.1	CTAF 122.9 0
---------------------------	----------------------------------	------------------------



Remain within 10 NM

2500

205°

025°

*1900 when Circling

*1800

3.55°

TCH 47

1.2 NM

1720

3300

hdg 240°

LNY R-278

GRAMY

△

LYN VORTAC

6000

3700

LYN 1.2

VGSi and descent angles not coincident (VGSi Angle 3.00/TCH 49).

CATEGORY	A	B	C	D
S-3	1660-1	353 (400-1)	1660-1¼	353 (400-1¼)
CIRCLING	1840-1 532 (600-1)	1880-1 572 (600-1)	1900-1½ 592 (600-1½)	1900-2 592 (600-2)

ELEV 1308 **D** TDZE 1307

1346

500 X 150

1323

025° 1.2 NM from FAF

MIRL Rwy 3-21 **0**

FAF to MAP 1.2 NM

Knots	60	90	120	150	180
Min:Sec	1:12	0:48	0:36	0:29	0:24