

APP CRS	Rwy Idg	6295
214°	TDZE	118
	Apt Elev	153

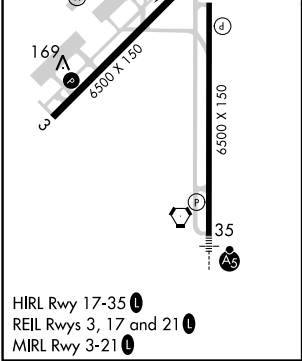
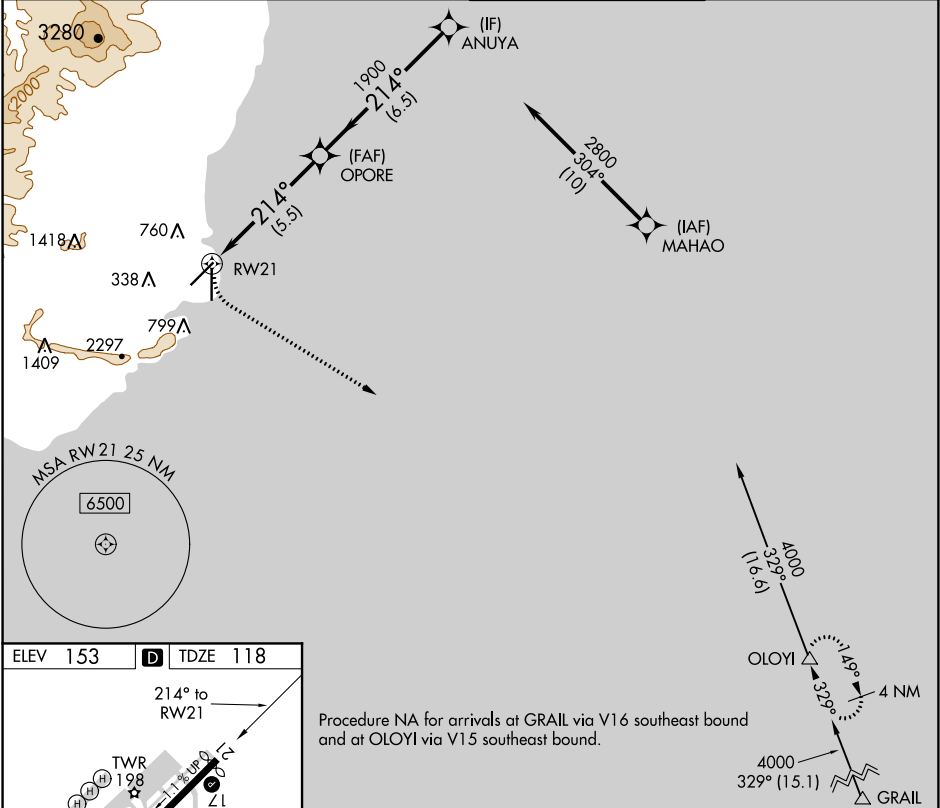
RNAV (RNP) Z RWY 21




LIHUE (LIH)(PHLI)

For uncompensated Baro-VNAV systems, procedure NA below 14°C (57°F) or above 48°C (119°F). GPS required.
*Missed approach requires minimum climb rate of 350 feet per NM to 2500.

MISSED APPROACH: Climbing left turn to 3000 direct OLOYI and hold.

ATIS 127.2	HCF CENTER 126.5 269.4	LIHUE TOWER ★ 118.9(CTAF) 0 263.1	GND CON 121.9
---------------	---------------------------	--------------------------------------	------------------



		VGSi and RNAV glidepath not coincident (VGSi Angle 3.00/TCH 45).			ANUYA	Procedure Turn NA
		OPORE	1900	214°	2800	
						GP 3.00° TCH 52
		5.5 NM	6.5 NM			
CATEGORY	A	B	C	D		
RNP 0.30 DA*	663-2 545 (600-2)					
RNP 0.30 DA	1078-4 960 (1000-4)					
AUTHORIZATION REQUIRED						

PAC, 31 DEC 2020 to 25 FEB 2021

PAC, 31 DEC 2020 to 25 FEB 2021