

APP CRS	Rwy Idg	6995
024°	TDZE	53
	Apt Elev	53

RNAV (RNP) Z RWY 2

KAHULUI (OGG)(PHOG)

RNP AR APCH.

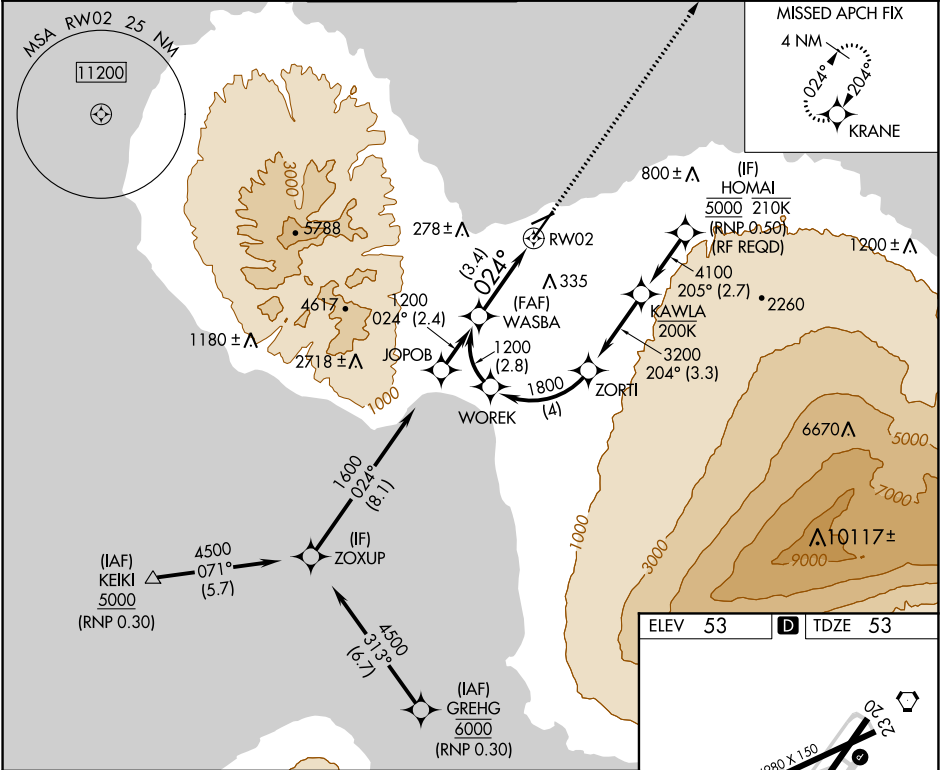
▼

For uncompensated Baro-VNAV systems, procedure NA below 14°C or above 54° C. When local altimeter setting not received, procedure NA. For inop ALS, increase RNP 0.30 all Cats visibility to ½ SM.

MALSR

MISSED APPROACH: Climb to 3000 direct KRANE and hold.

ATIS	HCF APPROACH	MAUI TOWER ★	GND CON	CLNC DEL	UNICOM
128.6	120.2 322.4 (NORTH) 119.5 225.4 (SOUTH)	118.7 (CTAF) 0 279.6	121.9 279.6	120.6 290.5	122.95



WASBA

VGSI and RNAV glidepath not coincident (VGSI Angle 3.00/TCH 77).

3000

KRANE

1200

GP 3.00° TCH 62

024°

RW02

3.4 NM

See planview for multiple IF locations.

CATEGORY	A	B	C	D
RNP 0.30 DA	349-¾ 296 (300-¾)			

AUTHORIZATION REQUIRED

