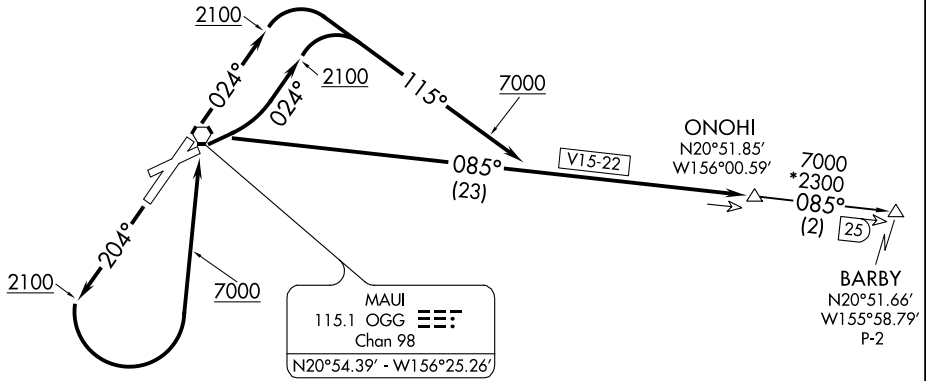


ATIS 128.6  
CLNC DEL  
120.6 290.5  
GND CON  
121.9 279.6  
MAUI TOWER \*  
118.7 (CTAF) 279.6  
HCF APPROACH  
NORTH 120.2 322.4  
SOUTH 119.5 225.4

TOP ALTITUDE:  
7000



NOTE: DME required.

TAKEOFF MINIMUMS

- Rwy 23: NA- obstacles and ATC.
- Rwy 2: Standard with ATC climb of 480' per NM to 2200.
- Rwy 5: Standard with ATC climb of 480' per NM to 2900.
- Rwy 20: Standard with minimum climb of 480' per NM to 7000.

NOTE: Chart not to scale.



DEPARTURE ROUTE DESCRIPTION

TAKEOFF RUNWAY 2: Climb on heading 024° to 2100 then climbing right turn to 7000 to ONOH1/OGG 23 DME via heading 115° and OGG R-085.

TAKEOFF RUNWAY 5: Climbing left turn on heading 024° to 2100 then climbing right turn to 7000 to ONOH1/OGG 23 DME via heading 115° and OGG R-085.

TAKEOFF RUNWAY 20: Climb on heading 204° to 2100 then climbing left turn to 7000 to ONOH1/OGG 23 DME via direct OGG VORTAC and OGG R-085.

BARBY TRANSITION (ONOH12.BARBY): From over ONOH1/OGG 23 DME on OGG R-085 to BARBY/OGG 25 DME.