

| | | |
|---------|----------|------|
| APP CRS | Rwy Idg | 6370 |
| 066° | TDZE | 4882 |
| | Apt Elev | 4892 |

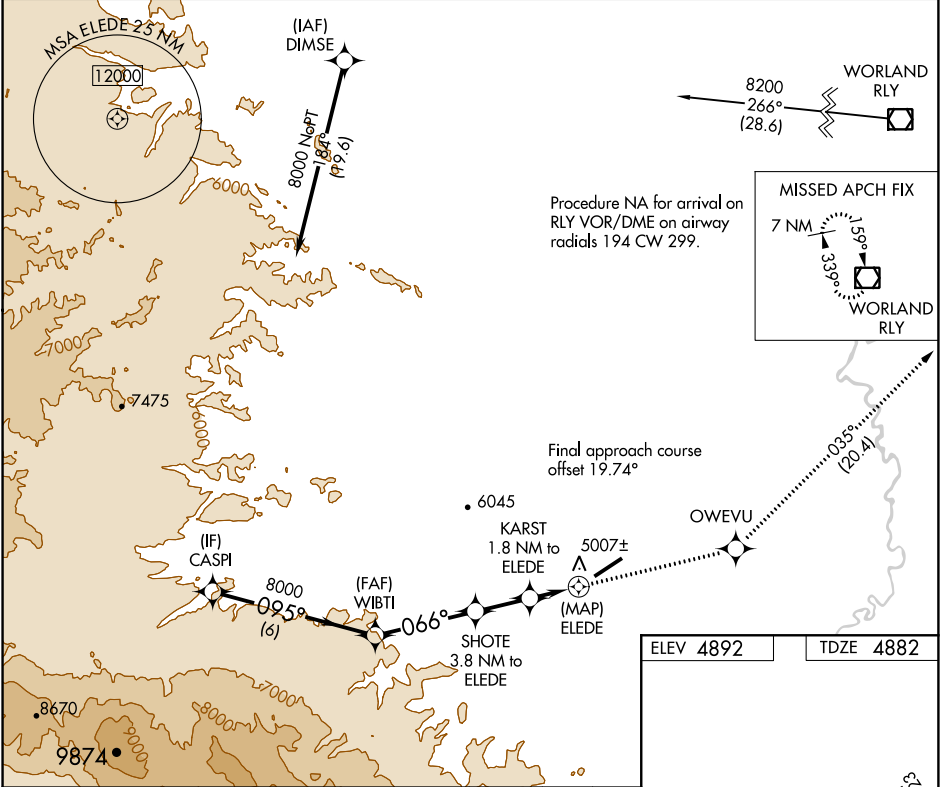
RNAV (GPS) RWY 5

HOT SPRINGS COUNTY (HSG)

Circling NA northwest of Rwy 5-23.
 DME/DME RNP-0.3 NA.
 -36°C Rwy 5 helicopter visibility reduction below ¾ SM NA.

MISSED APPROACH: Climb to 8200 direct OWEVU and on track 035° to RLY VOR/DME and hold.

| | | |
|---------------------|----------------------------------|------------------------|
| AWOS-3PT 121.125 | SALT LAKE CENTER 133.25 285.6 | UNICOM 122.8 (CTAF) |
|---------------------|----------------------------------|------------------------|



| | | | | |
|---|-----------------------|-----------------------|-----------------------|------------------------|
| VGSI and descent angles not coincident (VGSI Angle 2.75/TCH 39). CASPI WIBTI SHOTE KARST ELEDE RLY 8000 8000 6620 5860 8200 OWEVU tr 035° 6 NM 3.7 NM 2 NM 1.8 NM 0.7 NM | | | | |
| CATEGORY | A | B | C | D |
| LNAV MDA | 5240-1 358 (400-1) | | | NA |
| CIRCLING | 5320-1 428 (500-1) | 5540-1 648 (700-1) | 5580-2 688 (700-2) | 5880-3 988 (1000-2) |
| THERMOPOLIS, WYOMING Orig 02MAR17 | | | | |
| HOT SPRINGS COUNTY (HSG) RNAV (GPS) RWY 5 | | | | |

NW-1, 31 DEC 2020 to 28 JAN 2021

NW-1, 31 DEC 2020 to 28 JAN 2021