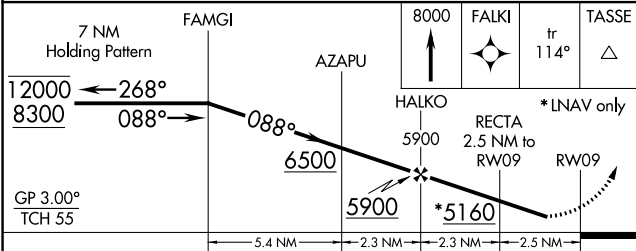
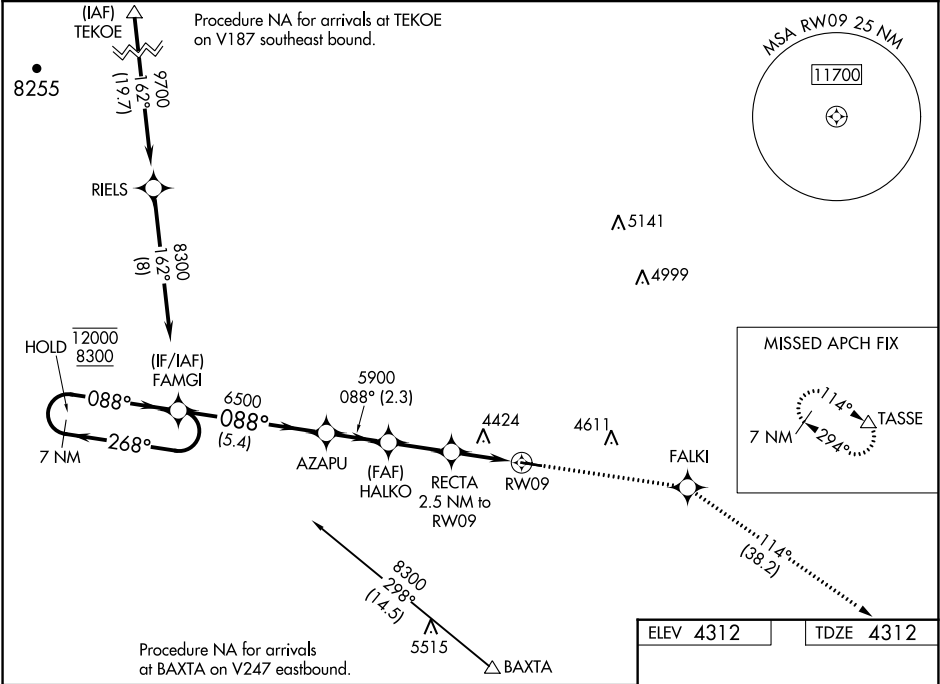


WAAS CH <b>99443</b> <b>W09A</b>	APP CRS <b>088°</b>	Rwy Idg TDZE Apt Elev	<b>4200</b> <b>4312</b> <b>4312</b>
--	------------------------	-----------------------------	---

RNAV (GPS) RWY 9  
WHEATLAND COUNTY AT HARLOWTON (HWQ)

RNP APCH. ▼ NA Rwy 9 helicopter visibility reduction below 1 SM NA. Baro-VNAV NA. Use Lewistown altimeter setting. Straight-in Rwy 9 NA at night, Circling Rwy 9 NA at night.	MISSED APPROACH: Climb to 8000 direct FALKI and on track 114° to TASSE and hold.
--	--

LWT ASOS <b>118.375</b>	SALT LAKE CENTER <b>127.75 351.9</b>	CTAF <b>122.90</b>
----------------------------	---	-----------------------



CATEGORY	A	B	C	D
LPV DA	4673-1	361 (400-1)		NA
LNAV/VNAV DA	4673-1	361 (400-1)		NA
LNAV MDA	4800-1	488 (500-1)		NA
CIRCLING	4940-1 628 (700-1)	5000-1 688 (700-1)		NA

ELEV 4312	TDZE 4312
MIRL Rwy 9-27	

NW-1, 31 DEC 2020 to 28 JAN 2021

NW-1, 31 DEC 2020 to 28 JAN 2021