

WAAS CH 50343 W22A	APP CRS 220°	Rwy Idg 5000 TDZE 5577 Apt Elev 5589
--	------------------------	---

RNAV (GPS) RWY 22
HUNT FIELD (LND)

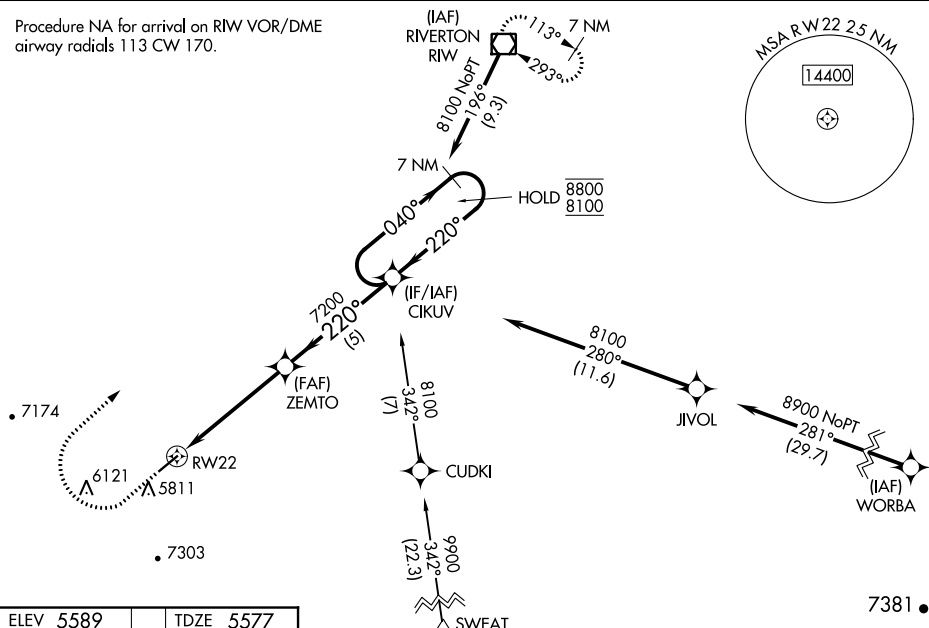
RNP APCH.

- T** Circling NA southeast of Rwy 4 and 22. Circling Rwy 4 NA
A at night. Rwy 22 helicopter visibility reduction below $\frac{3}{4}$ SM NA.
For uncompensated Baro-VNAV systems, LNAV/VNAV NA
below -26°C or above 54°C.

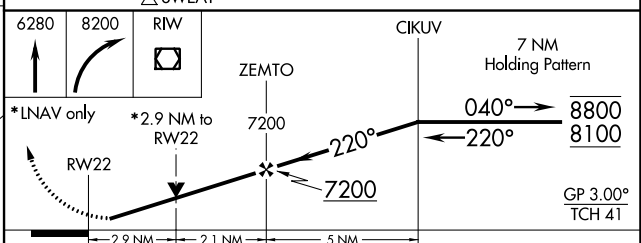
MISSED APPROACH: (Do not exceed 165K until RWY VOR/DME) Climb to 6280 then climbing right turn to 8200 direct RWY VOR/DME and hold.
#Missed approach requires minimum climb of 355 feet per NM to 6700.

ASOS 118.15	SALT LAKE CENTER 133.25 285.6	UNICOM 122.8 (CTAF) 0
-----------------------	---	---------------------------------

Procedure NA for arrival on RIW VOR/DME
airway radials 113 CW 170.



ELEV 5589		TDZE 5577
-----------	--	-----------



CATEGORY	A	B	C	D
LPV DA#	5827-3/4 250 (300-3/4)			NA
LPV DA	6060-13/8 483 (500-13/8)			NA
LNAV/ VNAV DA	6040-13/8 463 (500-13/8)			NA
LNAV MDA	6460-11/4 883 (900-11/4)		6460-21/2 883 (900-21/2)	NA
C CIRCLING	6460-11/4 871 (900-11/4)		6540-3 951 (1000-3)	NA

REIL Rwy 4 and 22 **L**MIRL Rwy 4-22 **L**