

WAAS CH 65735 W16A	APP CRS 165°	Rwy Idg TDZE Apt Elev	6601 5423 5423
--	------------------------	-----------------------------	---

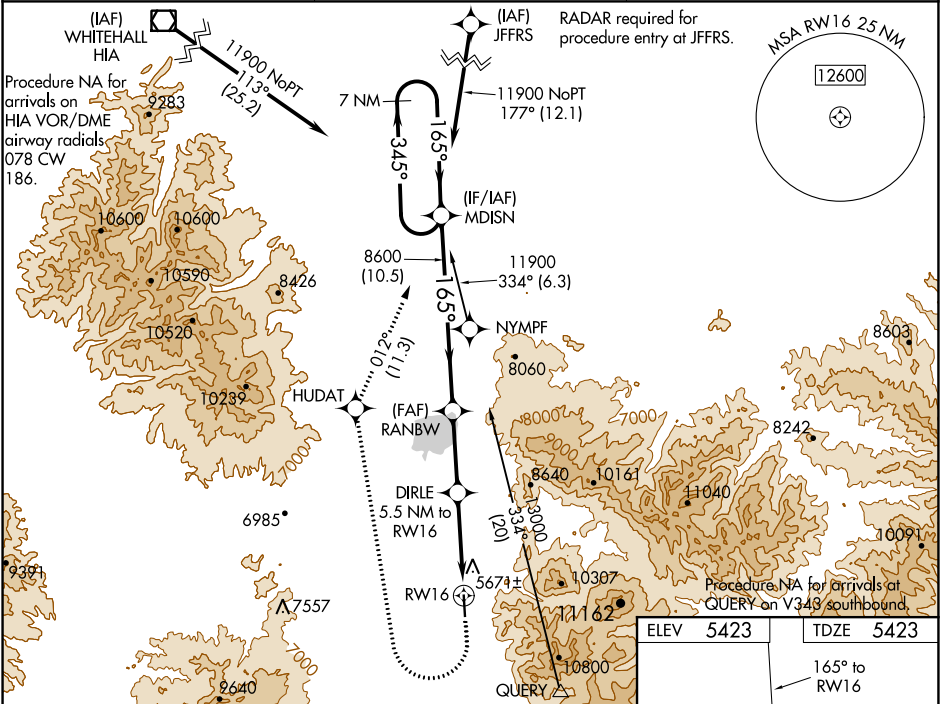
RNAV (GPS) RWY 16

ENNIS-BIG SKY (EKS)

For uncompensated Baro-VNAV systems, LNAV/VNAV NA below -25°C (-13°F) or above 53°C (127°F). Circling NA east of Rwy 16 and 34. DME/DME RNP-0.3 NA. Limit missed approach to 185K until MDISN.

MISSED APPROACH: Climb to 6400 then climbing right turn to 11900 direct HUDAT and on track 012° to MDISN and hold, continue climb-in-hold to 11900.

AWOS-3P 119.85	BIG SKY APP CON ★ 118.975 226.675	UNICOM 122.8 (CTAF) 0
--------------------------	---	---------------------------------



VGSi and RNAV glidepath not coincident (VGSi Angle 3.00/TCH 25).				
7 NM Holding Pattern				
11900 ← 345° → 165° → 165° → 8600 → *7200 → RW16				
GP 3.00° TCH 40				
10.5 NM 4.4 NM 3.4 NM 2.1 NM				
CATEGORY	A	B	C	D
LPV DA	5698-1 275 (300-1)			
LNAV/VNAV DA	6183-3 760 (800-3)			
LNAV MDA	6100-1 677 (700-1)		6100-1 677 (700-1)	
CIRCLING	6100-1 677 (700-1)		6100-2 677 (800-2)	

