

APP CRS	Rwy Idg	4471
083°	TDZE	3669
	Apt Elev	3703

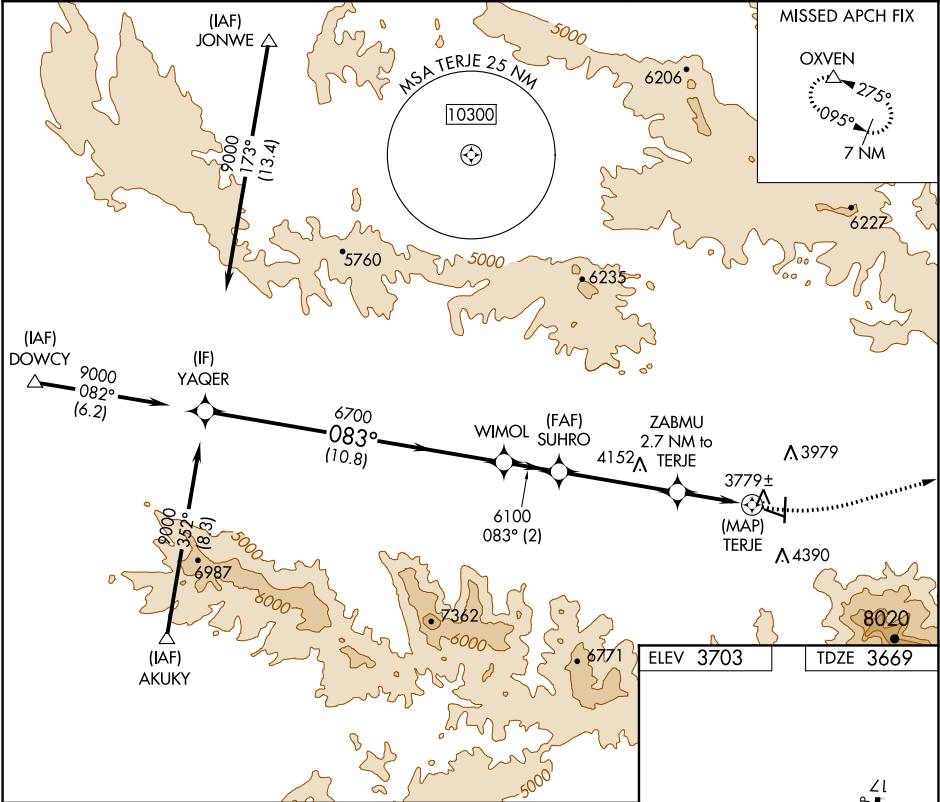
RNAV (GPS) Y RWY 9

GRANT COUNTY RGNL/OGILVIE FIELD (GCD)

When local altimeter setting not received, procedure NA.  
Circling NA south of Rwy 9-27. DME/DME RNP-0.3 NA.  
Helicopter visibility reduction below ¾ SM not authorized.

MISSED APPROACH: Climbing left turn to 12000 direct OXVEN and hold, continue climb-in-hold to 12000.

AWOS-3 118.375	SEATTLE CENTER 128.15 257.75	UNICOM 122.8 (CTAF) 0
-------------------	---------------------------------	--------------------------



YAQER	VGSi and descent angles not coincident (VGSi Angle 3.00/TCH 45).				12000	OXVEN
9000	083°	6700	6100	4700		
Procedure Turn NA			3.03° TCH 40			
	10.8 NM	2 NM	4.3 NM	2.7 NM	0.5	
CATEGORY	A	B	C	D		
LNAV MDA	4280-1	611 (600-1)	4280-1¾ 611 (600-1¾)	NA		
CIRCLING	4280-1 577 (600-1)	4520-1¼ 817 (900-1¼)	4520-2½ 817 (900-2½)	NA		

