

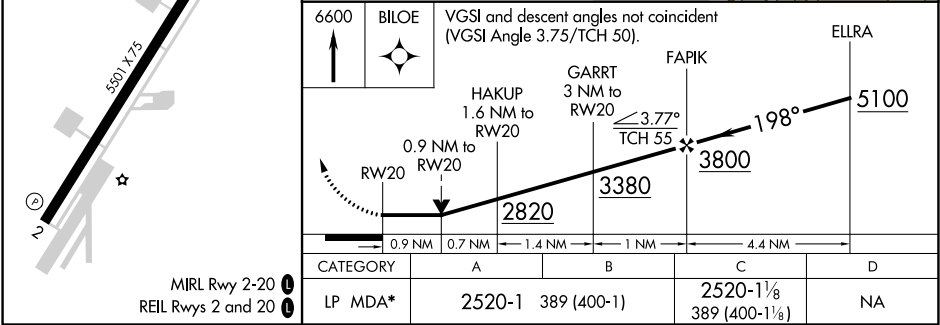
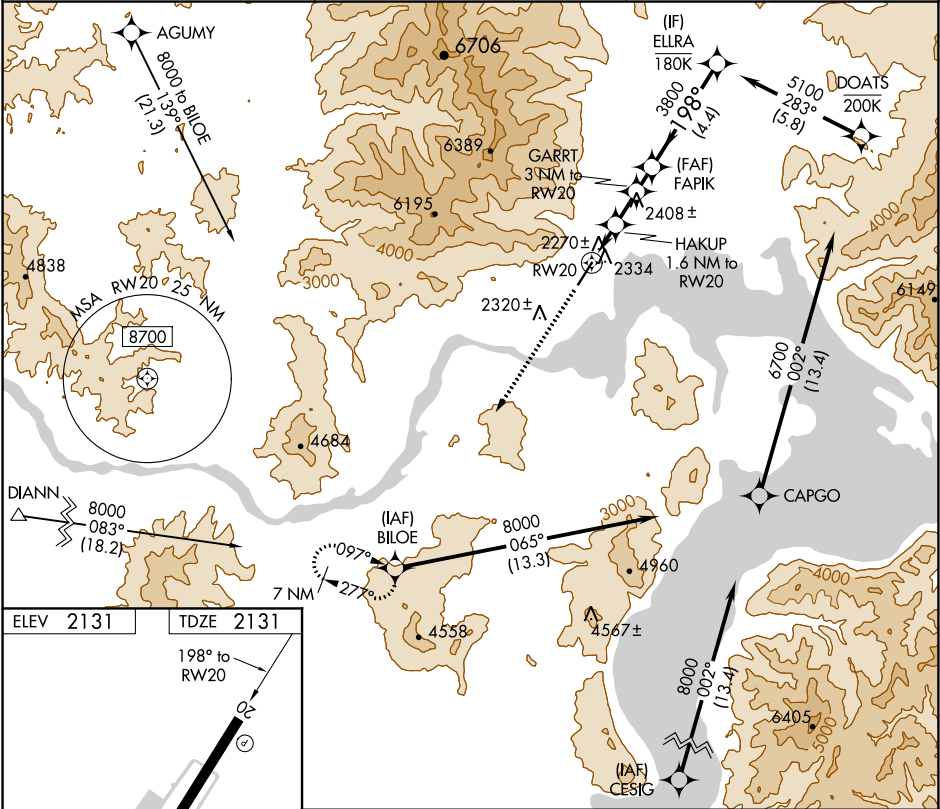
WAAS CH 99542 W20A	APP CRS 198°	Rwy Idg TDZE Apt Elev	5501 2131 2131
--	------------------------	-----------------------------	---

RNAV (GPS) Z RWY 20

SANDPOINT (SZT')

RNP APCH.	MISSED APPROACH: Climb to 6600 direct BILOE and hold, continue climb-in-hold to 6600. * Missed approach requires minimum climb of 318 feet per NM to 4500; if unable to meet climb gradient, see RNAV (GPS) Y RWY 20.
Rwy 20 helicopter visibility reduction below 3/4 SM NA. When local altimeter not received, procedure NA.	

AWOS-3 135.425	SEATTLE CENTER 123.95 290.55	UNICOM 122.7 (CTAF)
--------------------------	--	-------------------------------



NW-1, 31 DEC 2020 to 28 JAN 2021

NW-1, 31 DEC 2020 to 28 JAN 2021