

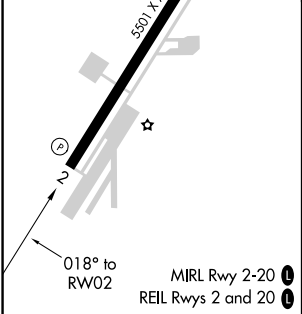
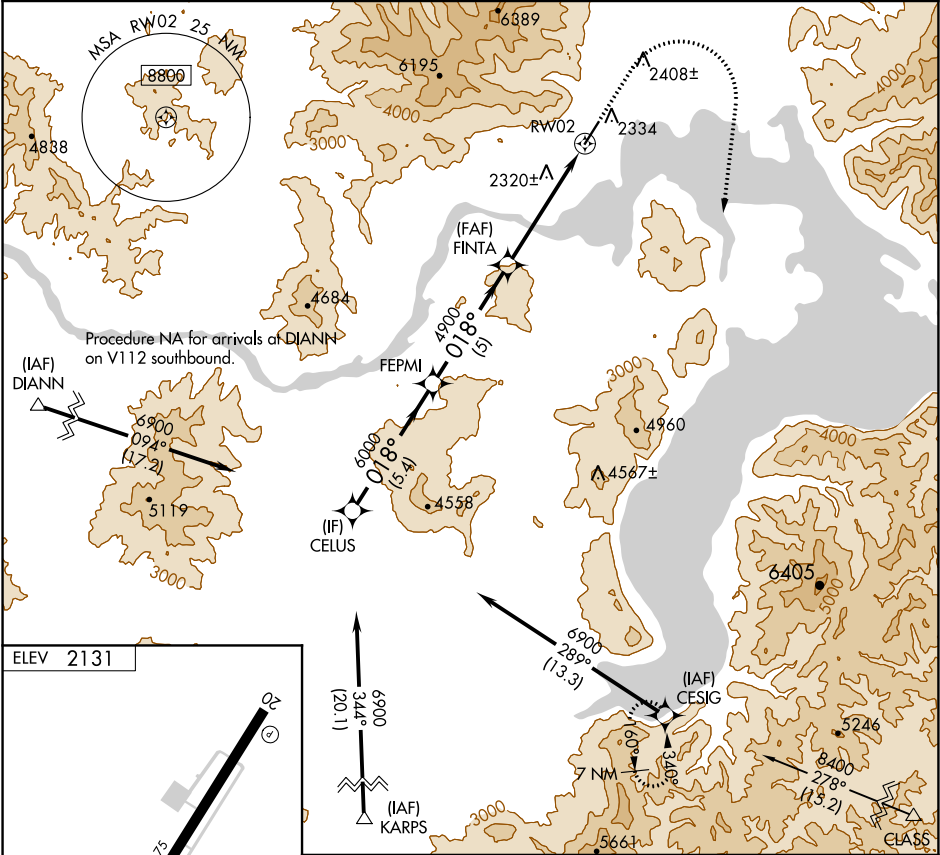


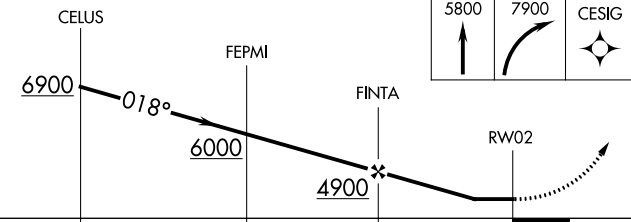




APP CRS	Rwy Idg	N/A
018°	TDZE	N/A
	Apt Elev	2131

RNAV (GPS)-B  
SANDPOINT (SZT')

 <p>DME/DME RNP-0.3 NA. Circling NA west of Rwy 2-20. When local altimeter setting not received, use Deer Park altimeter setting and increase all MDA 120 feet.</p>	<p>MISSED APPROACH: Climb to 5800 then climbing right turn to 7900 direct CESIG and hold.</p>
--	---

AWOS-3 135.425	SEATTLE CENTER 123.95 290.55	UNICOM 122.7 (CTAF) 
-------------------	---------------------------------	--



CELUS				5800	7900	CESIG
						
5.4 NM		5 NM		5.2 NM		
CATEGORY	A	B	C	D		
 CIRCLING	3600-1¼ 1469 (1500-1¼)	3600-1½ 1469 (1500-1½)	3600-3 1469 (1500-3)	4180-3 2049 (2100-3)		