

APP CRS
346°

Rwy Idg
TDZE
Apt Elev

7025
6221
6221

RNAV (GPS) RWY 34
AFTON MUNI (AFO)

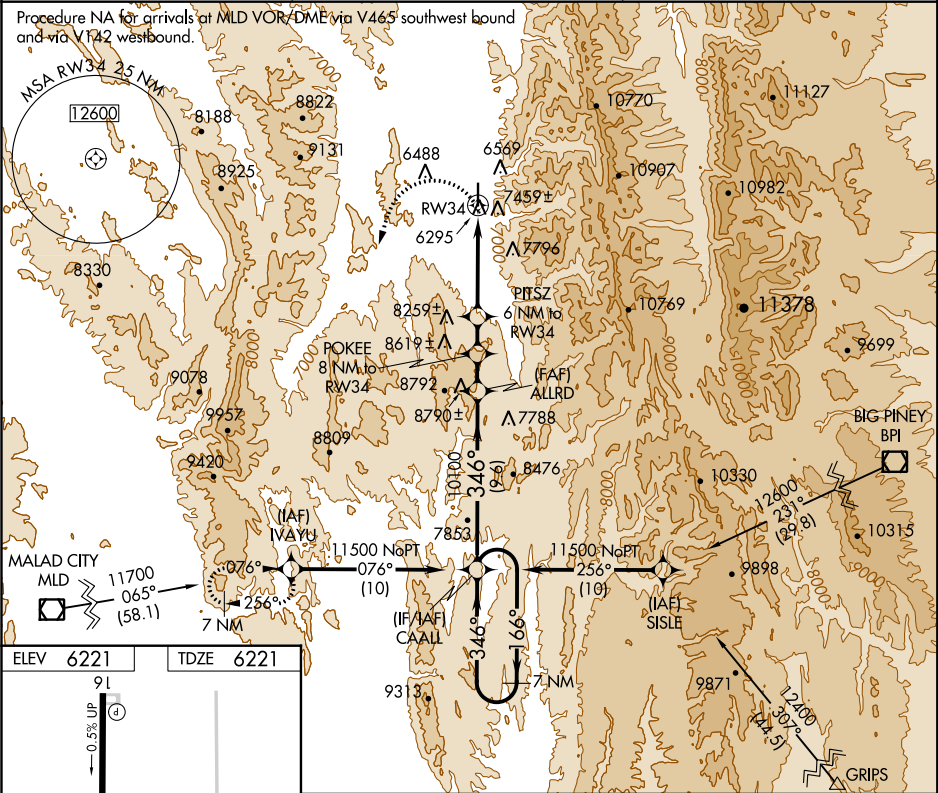
NA

-22°C

DME/DME RNP- 0.3 NA. Circling NA east of Rwy 16-34. Helicopter visibility reduction below ¾ SM NA. If local altimeter setting not received, procedure NA.

MISSED APPROACH: Climbing left turn to 11500 direct IVAYU and hold.

| | | |
|--------------------|----------------------------------|--------------------------|
| AWOS-3P 119.025 | SALT LAKE CENTER 128.35 381.6 | UNICOM 122.8 (CTAF) 0 |
|--------------------|----------------------------------|--------------------------|



ELEV 6221 TDZE 6221

91

0.5% UP

7025 X 75

346° to RWY 34

34

MIRL Rwy 16-34

REIL Rwy 16 and 34

7 NM Holding Pattern

CAALL

VGSI and descent angles not coincident (VGSI Angle 3.00/TCH 40).

ALLRD

POKEE 8 NM to RWY 34

PITTS 6 NM to RWY 34

4.3 NM to RWY 34

11500

IVAYU

166°

346°

346°

10100

9300

8660

3.76° TCH 45

9.6 NM

2 NM

2 NM

1.7 NM

4.3 NM

| CATEGORY | A | B | C | D |
|----------|---------------------------|---------------------------|-------------------------|----|
| LNAV MDA | 7620-1¼ 1399 (1400-1¼) | 7620-1½ 1399 (1400-1½) | 7620-3 1399 (1400-3) | NA |
| CIRCLING | 7620-1¼ 1399 (1400-1¼) | 7620-1½ 1399 (1400-1½) | 7620-3 1399 (1400-3) | NA |