

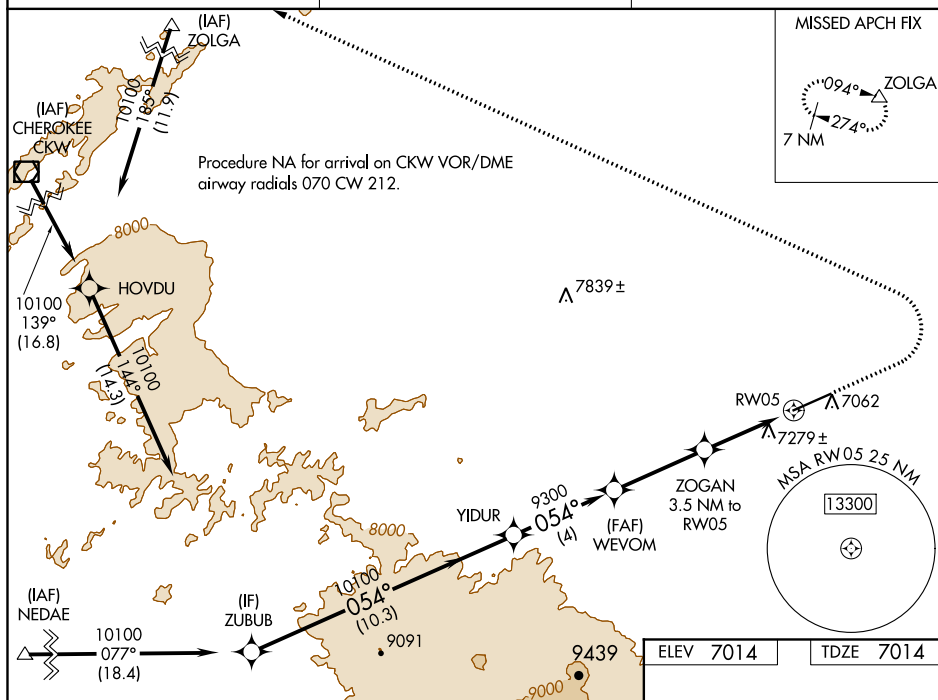
WAAS CH <b>65820</b> <b>W05A</b>	APP CRS <b>054°</b>	Rwy Idg <b>8801</b> TDZE <b>7014</b> Apt Elev <b>7014</b>
--	------------------------	---

RNAV (GPS) RWY 5  
SHIVELY FIELD (SAA)

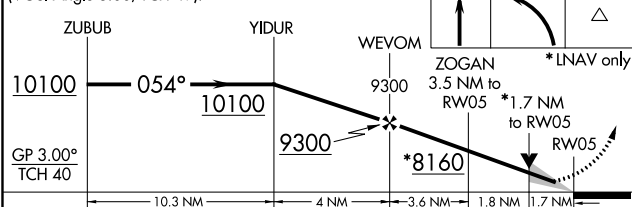
**T** For uncompensated Baro-VNAV systems, LNAV/VNAV NA  
**A** below -28°C or above 54°C.

**MISSED APPROACH:** Climb to 7800 then climbing left turn to 11000 direct ZOIGA and hold.

AWOS-3PT  
118.175

DENVER CENTER  
132.1 254.35UNICOM  
122.8 (CTAF) **L**

VGSI and RNAV glidepath not coincident  
(VGSI Angle 3.00/TCH 49).



CATEGORY		A	B	C	D
LPV	DA	7264-7 $\frac{7}{8}$ 250 (300-7 $\frac{7}{8}$ )			
LNAV/ VNAV	DA	7513-13 $\frac{3}{4}$ 499 (500-13 $\frac{3}{4}$ )			
LNAV	MDA	7620-1 606 (700-1)		7620-13 $\frac{3}{4}$ 606 (700-13 $\frac{3}{4}$ )	
CIRCLING		7620-1 606 (700-1)		7620-13 $\frac{3}{4}$ 606 (700-13 $\frac{3}{4}$ )	7620-2 606 (700-2)

ELEV 7014		TDZE 7014
-----------	--	-----------

--	--

\_\_\_\_\_


\_\_\_\_\_

\_\_\_\_\_

\_\_\_\_\_

\_\_\_\_\_

1 8% UP 23



1.8% DOW 8801 X 100

7058 ☆

7050

054° to

RW05

\_\_\_\_\_

\_\_\_\_\_

\_\_\_\_\_

TABLE 1. *Continued*

REIL Rwy 5 and 23 **L**  
MURR 5 00 **A**

MIRL Rwy 5-23 L

Orig-C 10OCT19

41°27'N-106°50'W

SHIVELY FIELD (SAA)

## RNAV (GPS) RWY 5