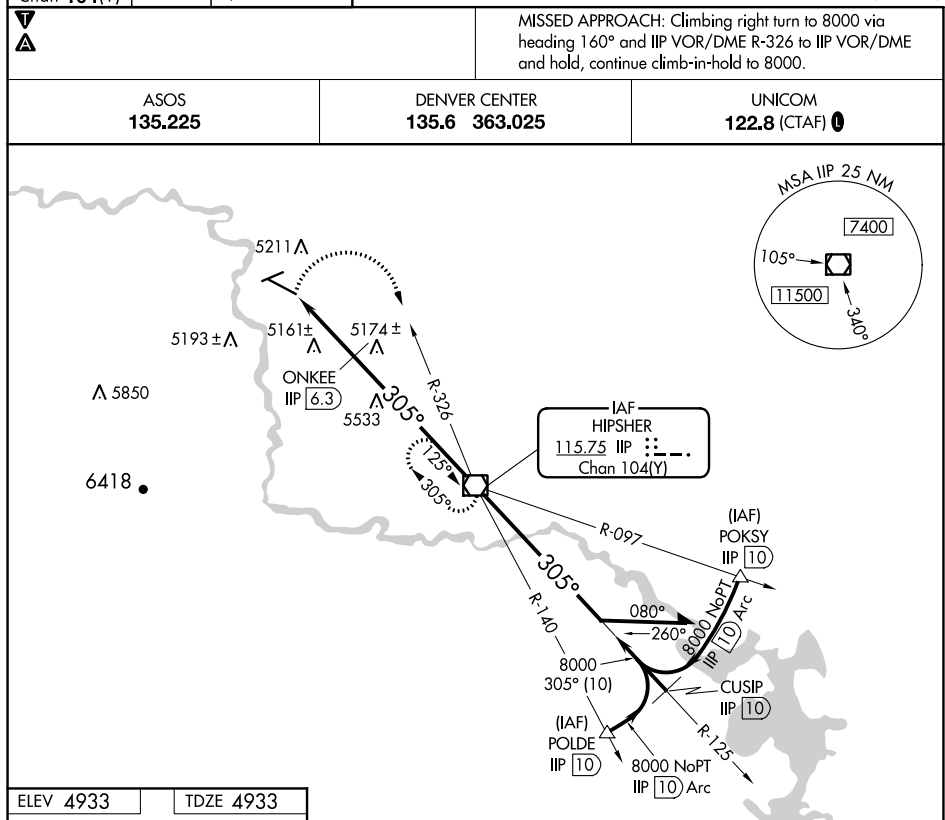
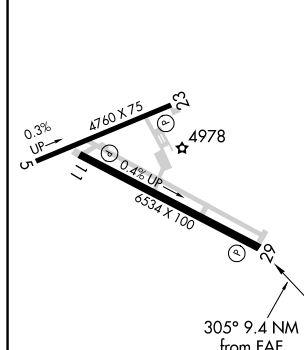


VOR/DME IIP 115.75 Chan 104(Y)	APP CRS 305°	Rwy Idg 6534 TDZE 4933 Apt Elev 4933
--	------------------------	---

VOR RWY 29
CONVERSE COUNTY (DGW)



ELEV 4933		TDZE 4933
-----------	--	-----------



REIL Rwy 11 and 29 **L**
MIRL Rwy 11-29 and 5-23 **L**

FAF to MAP 9.4 NM

Knots	60	90	120	150	180
Min:Sec	9:24	6:16	4:42	3:46	3:08

		IIP R-326 IIP		IIP VOR/DME Remain within 10 NM	
IIP 9.4 IIP 8 ONKKE IIP 6.3 5960 $\leq 3.03^\circ$ TCH 40 1.4 1.7 6.3 NM		8000 305° 8000 125° 8000			
CATEGORY	A		B		
S-29	5960-1¼ 1027 (1100-1¼)		5960-1½ 1027 (1100-1½)		5960-3 1027 (1100-3)
CIRCLING	5960-1¼ 1027 (1100-1¼)		5960-1½ 1027 (1100-1½)		5960-3 1027 (1100-3)
ONKKE FIX MINIMUMS					
S-29	5420-1 487 (500-1)		5420-1¼ 487 (500-1¼)		5420-1½ 487 (500-1½)
CIRCLING	5520-1 587 (600-1)		5520-1½ 587 (600-1½)		5540-2 607 (700-2)