

APP CRS
338°

Rwy Idg
5001

TDZE
3943

Apt Elev
3947

RNAV (GPS) RWY 33

CHOTEAU (CII)

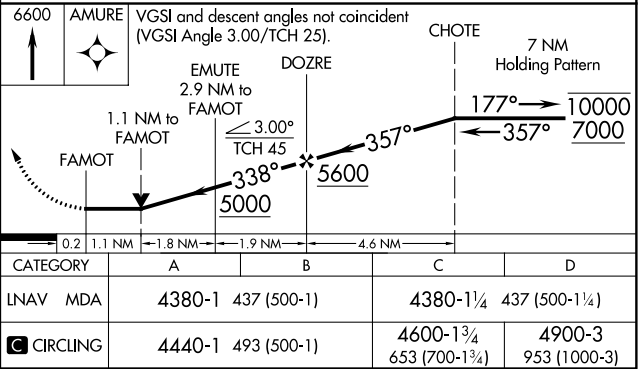
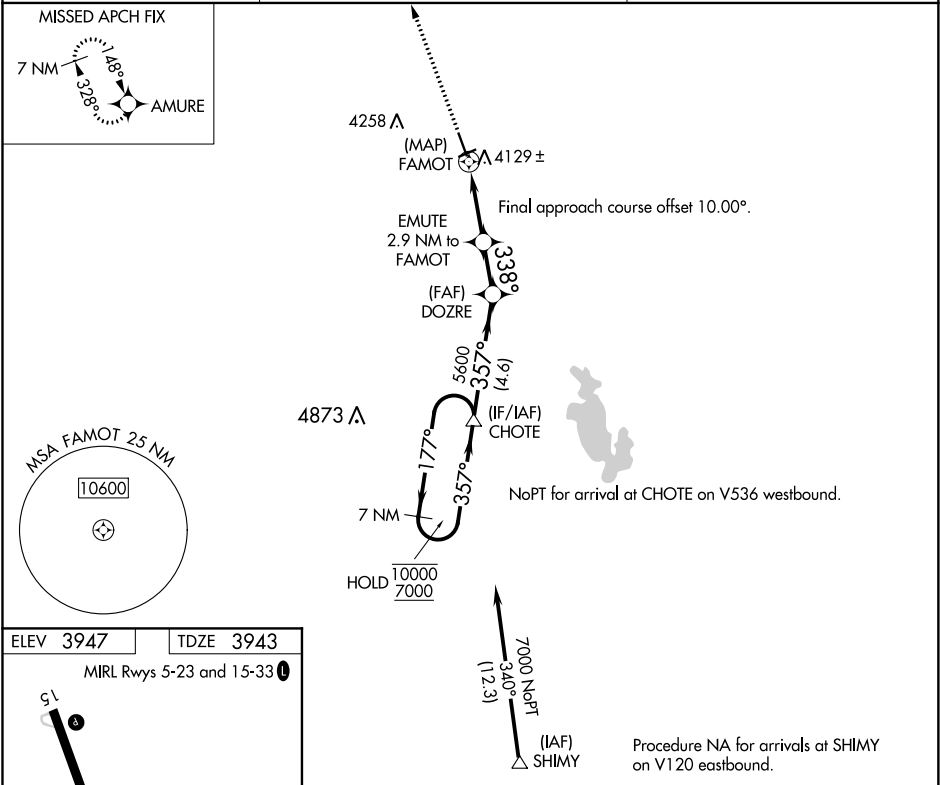
RNP APCH.

NA

Rwy 33 helicopter visibility reduction below ¾ SM NA.

MISSED APPROACH: Climb to 6600 direct to AMURE and hold.

AWOS-2 119.275	SALT LAKE CITY CENTER 133.4 285.4	UNICOM 122.8 (CTAF) 0
--------------------------	---	---------------------------------



NW-1, 31 DEC 2020 to 28 JAN 2021

NW-1, 31 DEC 2020 to 28 JAN 2021