

WAAS CH 90514 W27A	APP CRS 266°	Rwy Idg 5001 TDZE 4053 Apt Elev 4053
--	------------------------	---

RNAV (GPS) RWY 27
JEROME COUNTY (JER)

RNP APCH.



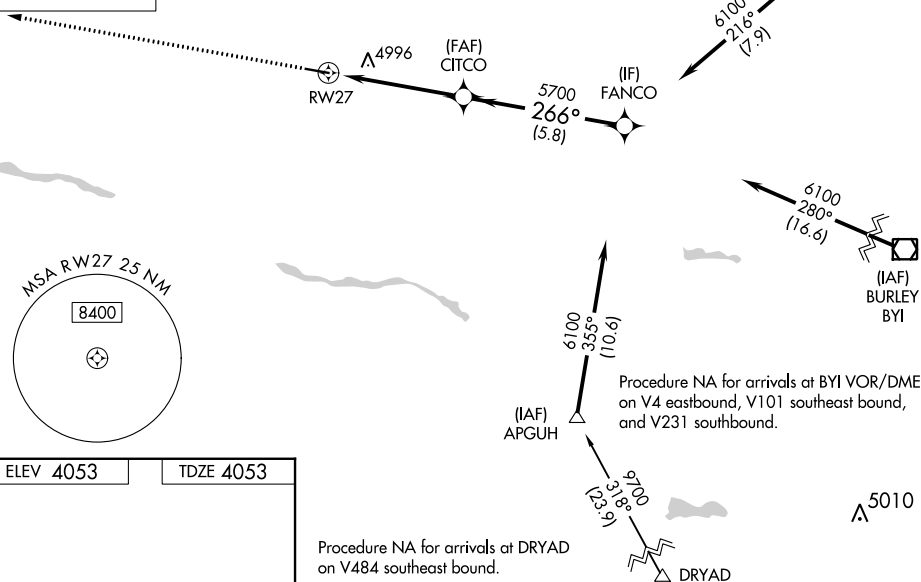
Circling NA north of Rwy 9 and 27.
Rwy 27 helicopter visibility reduction below $\frac{3}{4}$ SM NA.

MISSED APPROACH.
Climb to 6500 direct
LAHEW and hold.

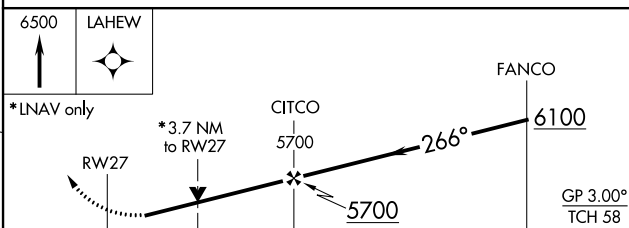
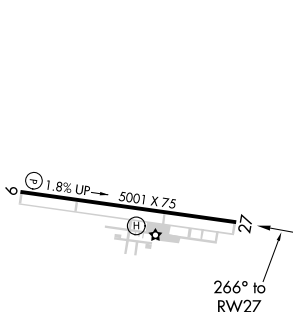
ASOS 135.225	TWIN FALLS APP CON★ 126.7 353.75	UNICOM 122.8 (CTAF) 0
------------------------	--	---------------------------------


MISSED APCH FIX

7 NM



ELEV 4053		TDZE 4053
-----------	--	-----------



	3.7 NM	1.3 NM	5.8 NM	
CATEGORY	A	B	C	D
LPV DA	4403-1 350 (400-1)			
INAV MDA	5300-1¼ 1247 (1300-1¼)	5300-1½ 1247 (1300-1½)	5300-3	1247 (1300-3)
 CIRCLING	5300-1¼ 1247 (1300-1¼)	5300-1½ 1247 (1300-1½)	5300-3	1247 (1300-3)

JEROME, IDAHO

Amdt 1 30JAN20

JEROME COUNTY (JER)

42°44'N-114°27'W

RNAV (GPS) RWY 27

NW-1, 31 DEC 2020 to 28 JAN 2021