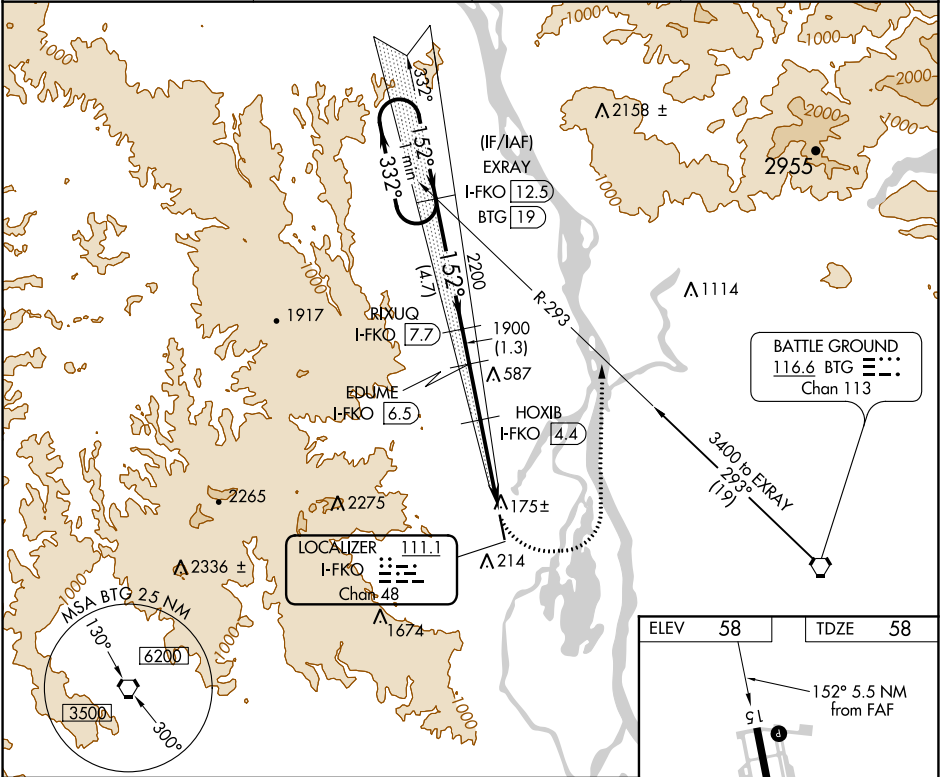


LOC/DME	I-FKO	APP CRS	Rwy Idg	5100
111.1		152°	TDZE	58
Chan 48			Apt Elev	58

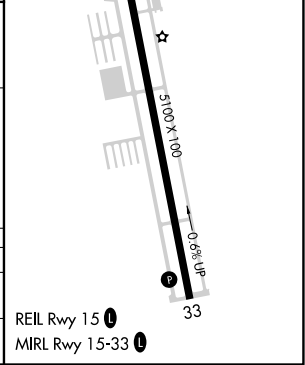
LOC/DME RWY 15  
SCAPOOSE INDUSTRIAL AIRPARK (SPB)

<p><b>⚠</b> Circling NA west of Rwy 15-33. When local altimeter setting not received, use Portland Intl altimeter setting and increase all MDA 40 feet; increase S-15 Cat C/D visibility and Circling Cat C visibility 1/8 mile, Cat D visibility 1/4 mile. Helicopter visibility reduction below 1 SM NA. Night Landing Rwy 15 NA.</p>	<p><b>MISSED APPROACH:</b> Climbing left turn to 3000 on heading 020° and on BTG VORTAC R-293 to EXRAY/I-FKO 12.5 DME and hold.</p>
---	---

ASOS 135.875	PORTLAND APP CON 124.35 299.2	CLNC DEL 121.65	UNICOM 122.8 (CTAF) 0
-----------------	----------------------------------	--------------------	--------------------------



One Minute Holding Pattern	EXRAY I-FKO 12.5	RIXUQ I-FKO 7.7	EDUME I-FKO 6.5	HOXIB I-FKO 4.4	BTG R-293	EXRAY I-FKO 12.5
3000	332°	152°	152°	3.07°	2200	1900
VGSJ and descent angles not coincident (VGSJ Angle 3.73/TCH 41).						
4.7 NM 1.3 NM 2.1 NM 3.5 NM						
CATEGORY	A	B	C	D		
S-15	660-1	602 (700-1)	660-1 3/4	602 (700-1 3/4)		
CIRCLING	660-1	602 (700-1)	660-1 3/4	860-2 1/2		
			602 (700-1 3/4)	802 (900-2 1/2)		



NW-1, 31 DEC 2020 to 28 JAN 2021

NW-1, 31 DEC 2020 to 28 JAN 2021