




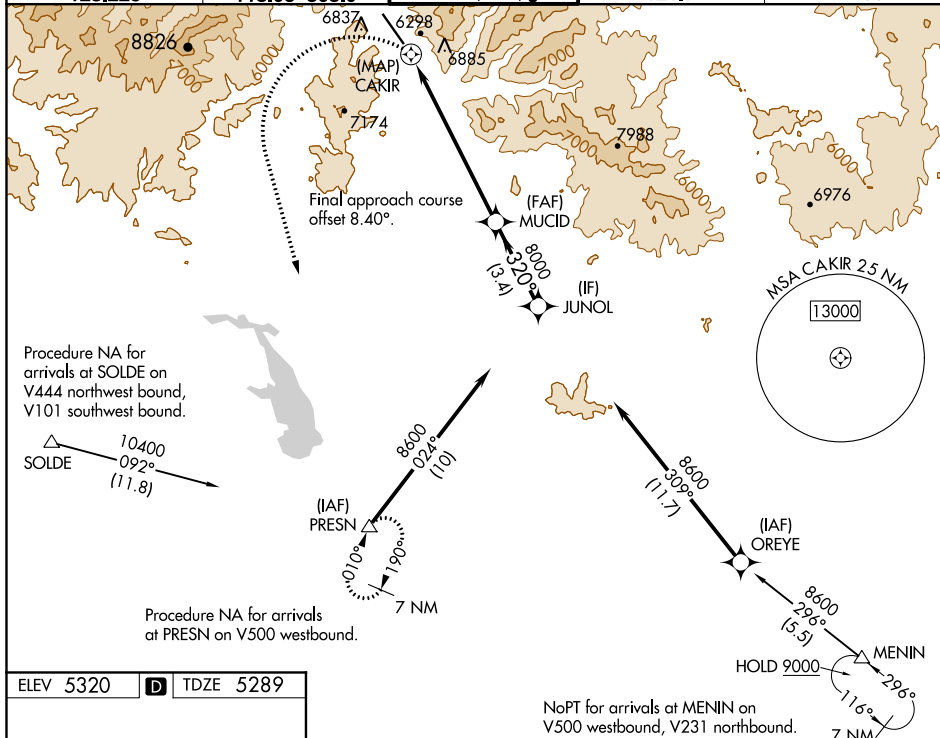
WAAS CH 62939 W31B	APP CRS 320°	Rwy Idg 6631 TDZE 5289 Apt Elev 5320
--	------------------------	---

RNAV (GPS) Y RWY 31
FRIEDMAN MEMORIAL (SUN)

	Circling NA northeast of Rwy 13-31.
	DME/DME RNP-0.3 NA. Rwy 31
	helicopter visibility reduction below 1 SM NA.

MISSED APPROACH: (Do not exceed 185 KIAS until PRESN) Climbing left turn to 8700 direct PRESN and hold. *Missed approach requires minimum climb of 410 feet per NM to 7600.

ATIS 128.225	SALT LAKE CENTER 118.05 363.0	HAILEY TOWER ★ 125.6 (CTAF) 0	GND CON 121.7	UNICOM 122.95
-----------------	----------------------------------	----------------------------------	------------------	------------------



ELEV 5320	D	TDZE 5289
-----------	----------	-----------

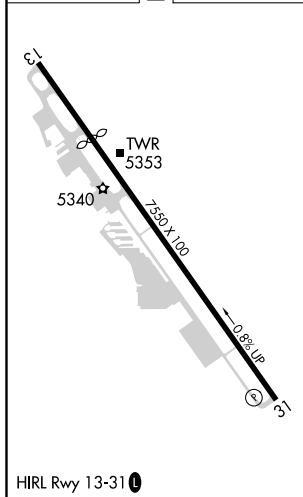


Figure 1 illustrates a flight profile with the following details:

- Altitudes:** 8700, 8000, and 8600 feet.
- Points:** PRESN, CAKIR, MUCID, and JUNOL.
- Distances:** 0.5 NM, 6.7 NM, and 3.4 NM.
- Angles:** 3.50° TCH 55 and 320°.
- Flight Profile:** A solid line representing the climb and a dashed line representing the approach.
- Labels:** MUCID, JUNOL, 8000, 8600, 320°, 3.50° TCH 55, 0.5 NM, 6.7 NM, 3.4 NM.
- Category:** CIRCLING.

RNAV (GPS) Y RWY 31