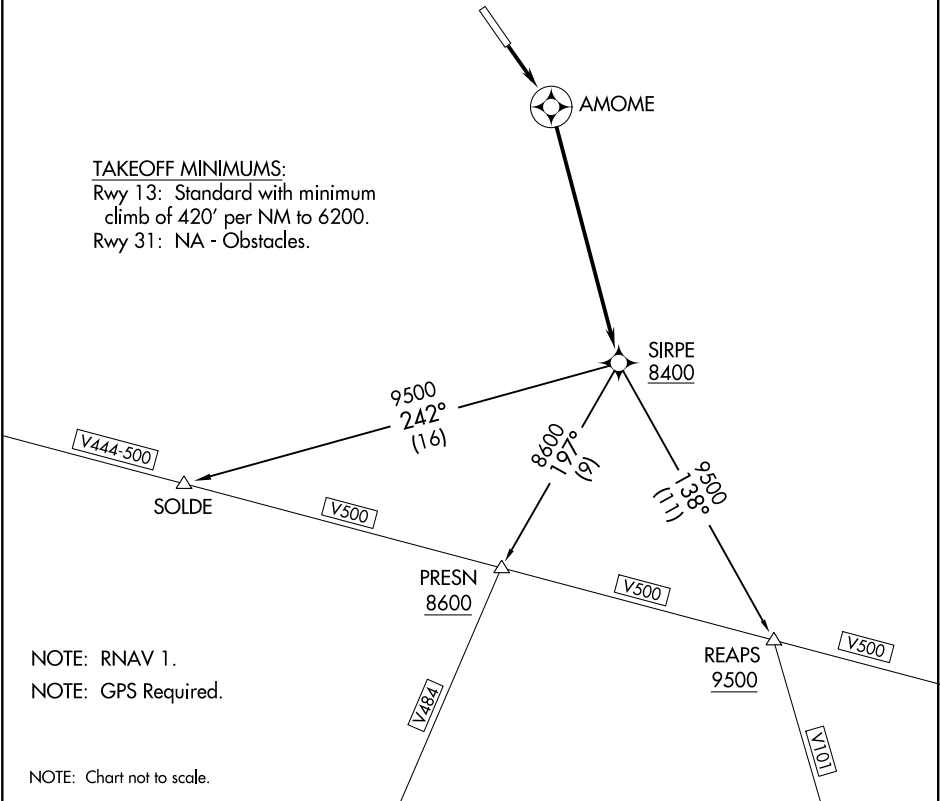


TOP ALTITUDE:
PRESN AND REAPS TRANSITIONS: 10000;
SOLDE TRANSITION: ASSIGNED BY ATC

GND CON
121.7
HAILEY TOWER ★
125.6
SALT LAKE CENTER
118.05 363.0
UNICOM 122.95

TAKEOFF MINIMUMS:
Rwy 13: Standard with minimum
climb of 420' per NM to 6200.
Rwy 31: NA - Obstacles.



NOTE: RNAV 1.
NOTE: GPS Required.

NOTE: Chart not to scale.

DEPARTURE ROUTE DESCRIPTION

TAKEOFF RUNWAY 13: Climb direct AMOME, then climbing right turn direct
SIRPE; cross SIRPE at or above 8400, thence. . . .

. . . .on (Transition).

- PRESN TRANSITION (AUREL3.PRESN)

REAPS TRANSITION (AUREL3.REAPS)

SOLDE TRANSITION (AUREL3.SOLDE)