

WAAS CH 77929 W11A	APP CRS 111°	Rwy Idg TDZE 1988 Apt Elev 1989	5091
--	------------------------	---	-------------

RNAV (GPS) RWY 11

L M CLAYTON (OLF')

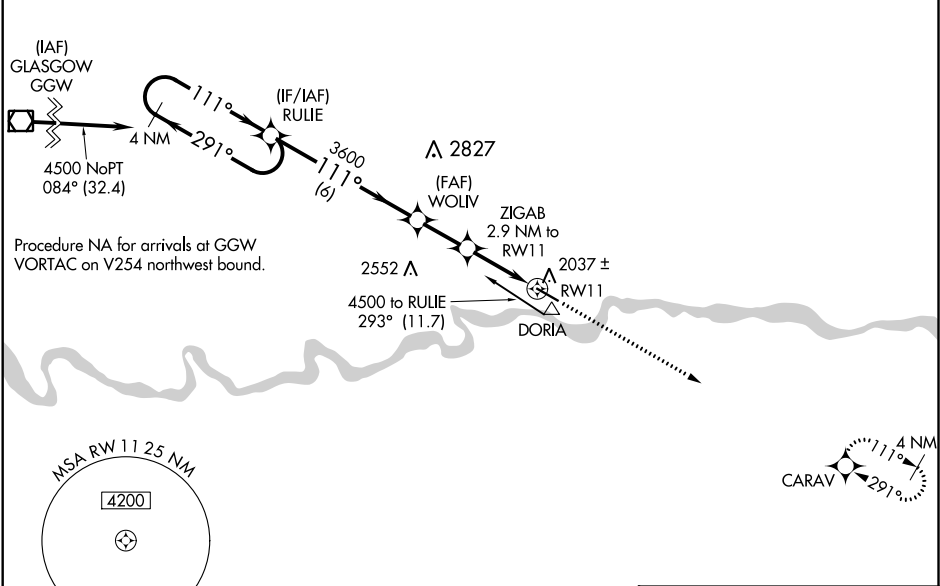
⚠

-38°C

For uncompensated Baro-VNAV systems, LNAV/VNAV NA below -18°C (0°F) or above 54°C (130°F). DME/DME RNP-0.3 NA. When local altimeter not received, use Glasgow altimeter setting and increase all DA 141 feet and all MDA 160 feet and increase LPV all Cats visibility ¾ mile; LNAV/VNAV all Cats ½ mile; LNAV Cats C/D ½ mile; Circling Cat C ½ mile and Cat D ¼ mile. Baro-VNAV and VDP NA with Glasgow altimeter setting.

MISSED APPROACH:
Climb to 4800 direct CARAV and hold.

ASOS 118.325	SALT LAKE CENTER 126.85 305.2	UNICOM 122.8 (CTAF) ❶
------------------------	---	---------------------------------



4 NM Holding Pattern

RULIE

4500 ← 291°
111° →

GP 3.00°
TCH 40

VGSI and RNAV glidepath not coincident (VGSI Angle 3.00/TCH 28).

WOLIV

3600

ZIGAB 2.9 NM to RW11

*1.5 NM to RW11

*2940

6 NM

2 NM

1.4 NM

1.5 NM

4800

CARAV

* LNAV only.

111° to RW11

3091 x 100

CATEGORY	A	B	C	D
LPV DA	2188-¾ 200 (200-¾)			
LNAV/VNAV DA	2266-7/8 278 (300-7/8)			
LNAV MDA	2500-1 512 (600-1)		2500-1¾ 512 (600-1¾)	
CIRCLING	2500-1 511 (600-1)		2540-2 551 (600-2)	

MIRL Rwy 11-29 ❶

REIL Rwy 11-29 ❶