

WAAS CH 77903 W26A	APP CRS 259°	Rwy Idg TDZE 389 Apt Elev 394	4001
--	------------------------	---	-------------

RNAV (GPS) RWY 26

RICHLAND (RLD)

RNP APCH.

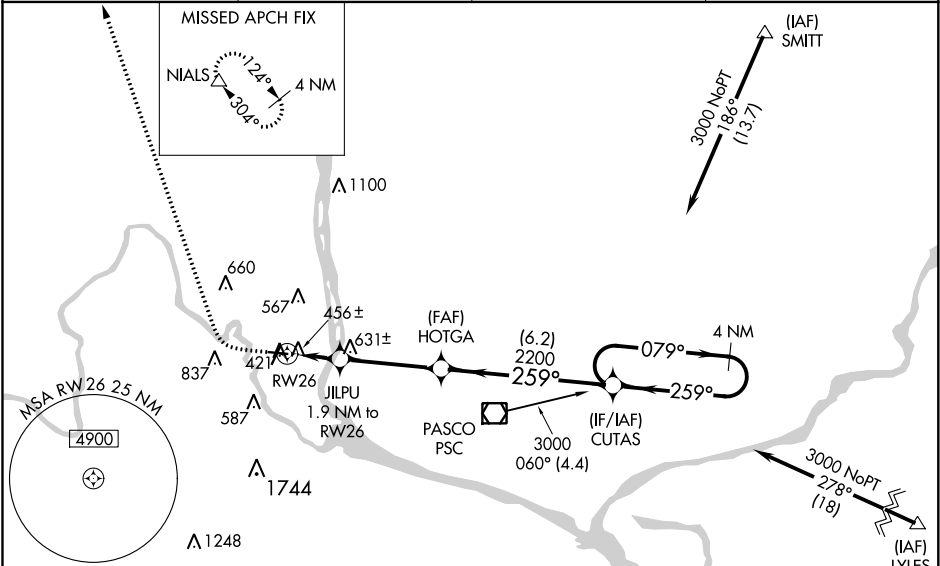
▼

▲ NA

When local altimeter setting not received, use Pasco altimeter setting and increase all DA 21 feet and all MDA 40 feet and increase LNAV/VNAV Cats A and B visibility ½ mile, Circling Cat C visibility ¼ mile. Baro-VNAV NA when using Pasco altimeter setting. For uncompensated Baro-VNAV systems, LNAV/VNAV NA below -15°C (4°F) or above 41°C (107°F). Rwy 26 helicopter visibility reduction below ¾ SM NA.

MISSED APPROACH: Climb to 900 then climbing right turn to 3500 direct NIALS and hold.

AWOS-3PT 132.675	CHINOOK APP CON★ 128.75 377.2	CLNC DEL 122.4	UNICOM 122.7 (CTAF) 0
----------------------------	---	--------------------------	---------------------------------



ELEV 394	TDZE 389
-----------------	-----------------

Procedure NA for arrivals at PSC VOR/DME on V187 southwest bound and on V281 southeast bound.

900

3500

NIALS

*LNAV only

*0.9 NM to RW26

JILPU 1.9 NM to RW26

HOTGA 2200

CUTAS

4 NM Holding Pattern

0.9 NM

1 NM

3.6 NM

6.2 NM

*1020

2200

079°

259°

3000

GP 3.00°

TCH 53

CATEGORY	A	B	C	D
LPV DA	657-7 ⁸	268 (300-7 ⁸)	657-1	268 (300-1)
LNAV/VNAV DA	639-3 ⁴	250 (300-3 ⁴)	639-1	250 (300-1)
LNAV MDA	720-1 331 (400-1)			
CIRCLING	920-1 526 (600-1)	1000-1 606 (700-1)	1200-2 ¹ ₄ 806 (700-2 ¹ ₄)	1940-3 1546 (1600-3)