

LOC/DME I-RLD	APP CRS	Rwy ldg	4009
110.5	189°	TDZE	390
Chan 42		Apt Elev	394

LOC RWY 19
RICHLAND (RLD)

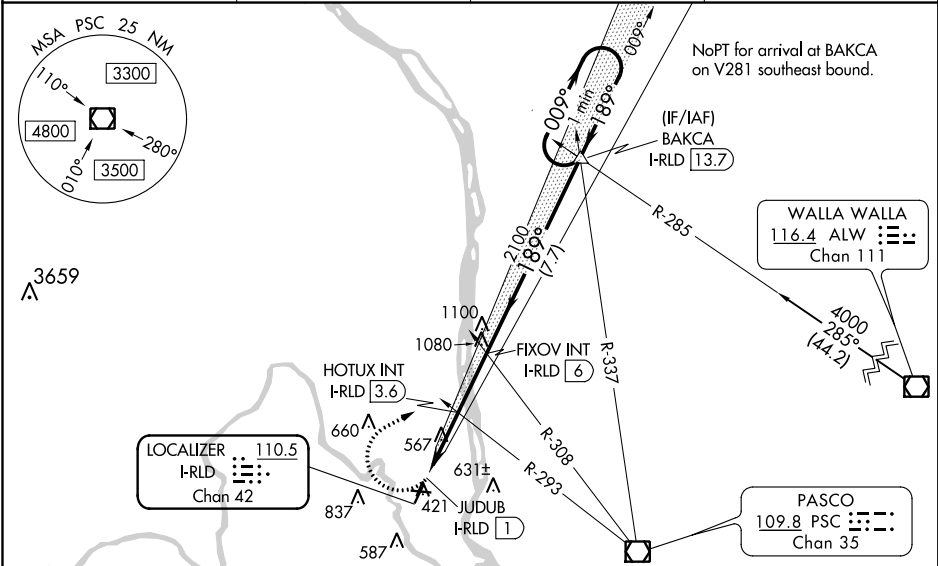
NA

VDP NA with Pasco altimeter setting. When local altimeter setting not received, use Pasco altimeter setting and increase HOTUX FIX minimums S-19 Cats C and D 1/8 mile and Circling Cat C 1/4 mile. For inop MALS when using Pasco altimeter setting, HOTUX FIX minimums increase S-19 Cats C and D visibility 3/8 mile. Inop table does not apply to S-19 Cat C. Helicopter visibility reduction below 3/4 SM NA. For inop MALS increase HOTUX FIX minimums S-19 Cat D visibility 1/4 mile. Inop table does not apply to S-19 Cat C when using Pasco altimeter setting.

MALS

MISSED APPROACH: Climbing right turn to 4000 on heading 045° and on PSC VOR/DME R-337 to BAKCA INT/I-RLD 13.7 DME and hold, continue climb-in-hold to 4000.

AWOS-3PT 132.675	CHINOOK APP CON ★ 128.75 377.2	CLNC DEL 122.4	UNICOM 122.7 (CTAF) 0
---------------------	-----------------------------------	-------------------	--------------------------



ELEV 394 TDZE 390

189° 5 NM from FAF

REIL Rwy 1 and 19
MIRL Rwy 1-19
MIRL Rwy 8-26

FAF to MAP 5 NM

Knots	60	90	120	150	180
Min:Sec	5:00	3:20	2:30	2:00	1:40

4000

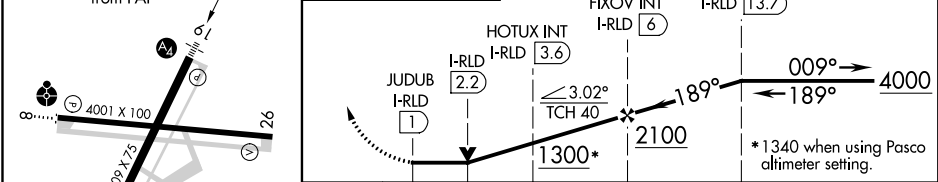
hdg 045°

PSC R-337

BAKCA

VGSI and descent angles not coincident (VGSI Angle 3.00/TCH 30).

One Minute Holding Pattern



CATEGORY	A	B	C	D
S-19	1300-1 910 (1000-1)		1300-2½ 910 (1000-2½)	
CIRCLING	1300-1¼ 906 (1000-1¼)		1300-2¾ 906 (1000-2¾)	1940-3 1546 (1600-3)
HOTUX FIX MINIMUMS (DUAL VOR RECEIVERS OR DME REQUIRED)				
S-19	880-¾ 490 (500-¾)		880-1⅛ 490 (500-1⅛)	
CIRCLING	920-1 526 (600-1)	1000-1 606 (700-1)	1200-2¼ 806 (900-2¼)	1940-3 1546 (1600-3)

NW-1, 31 DEC 2020 to 28 JAN 2021

NW-1, 31 DEC 2020 to 28 JAN 2021