

WAAS CH 61225 W32A	APP CRS 316°	Rwy Idg 5310 TDZE 4176 Apt Elev 4176
--	------------------------	---

RNAV (GPS) RWY 32

MONDELL FIELD (ECS)

RNP APCH.

T When Newcastle altimeter setting not received, procedure NA. For uncompensated Baro-VNAV systems, LNAV/VNAV NA below -23°C (-9°F) or above 53°C (128°F). Circling NA northeast of Rwy 14-32. For inop ODAL, increase LNAV/VNAV visibility all Cats and LNAV Cats C/D ½ mile. Inop table does not apply to LPV all Cats and LNAV Cats A/B.

ODALS



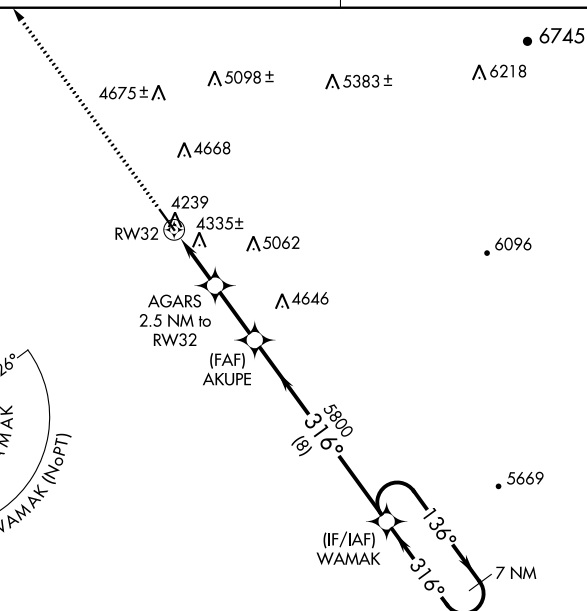
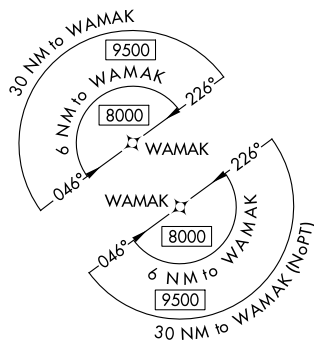
MISSED APPROACH: Climb to 9500 direct PULVE and hold, continue climb-in-hold to 9500.

AWOS-3PT
118.0

DENVER CENTER
127.95 338.2

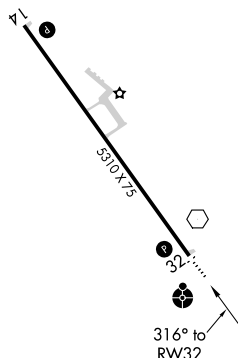
UNICOM
122.8 (CTAF) **L**

MISSED APCH FIX

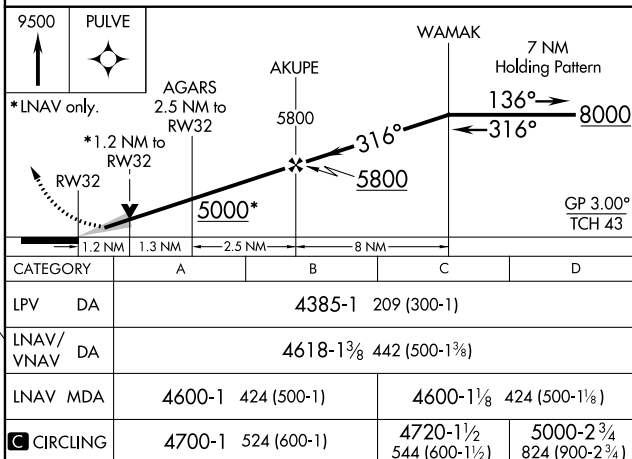


ELEV 4176

TDZE	4176
------	------

REIL Rwy 14 

MIRL Rwy 14-32 L



NEWCASTLE, WYOMING

Amdt 1A 28MAR19

43°53'N-104°19'W

MONDELL FIELD (ECS)

RNAV (GPS) RWY 32