

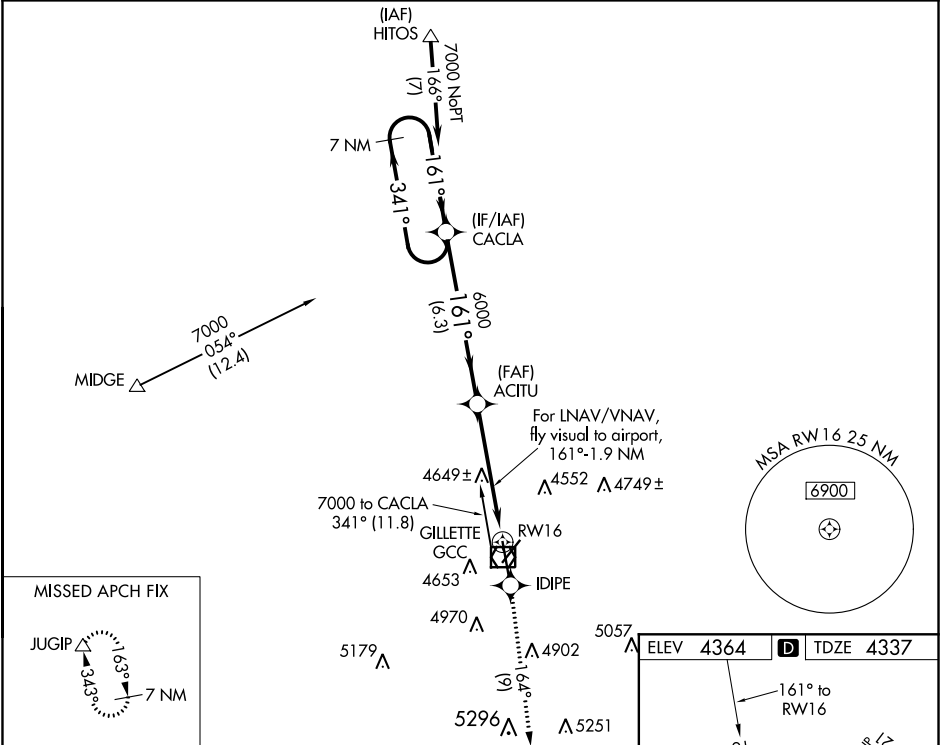
WAAS CH 86221 W16A	APP CRS 161°	Rwy Idg TDZE Apt Elev	7500 4337 4364
--	------------------------	-----------------------------	---

RNAV (GPS) RWY 16
NORTHEAST WYOMING RGNL (GCC)

A Circling to Rwy 3 NA at night. For uncompensated Baro-VNAV systems, LNAV/VNAV NA below -23°C (-9°F) or above 54°C (130°F). DME/DME RNP-0.3 NA.

MISSED APPROACH: Climb to 7000 direct IDIPE and on track 164° to JUGIP and hold.

ASOS 124.175	DENVER CENTER 135.6 363.025	UNICOM 122.95	CTAF 118.5 0
------------------------	---------------------------------------	-------------------------	------------------------



7 NM Holding Pattern		CACLA	*LNAV only	7000	IDIPE	tr 164°	JUGIP
7000		341°	161°	6000	161°	161°	161°
GP 3.00° TCH 45		6.3 NM	3.4 NM	1.6 NM	For LNAV/VNAV, fly visual to airport, 161°-1.9 NM		
CATEGORY	A	B	C	D			
LPV DA	4660-1¼		323 (300-1¼)				
LNAV/VNAV DA	4980-2½		643 (700-2½)				
LNAV MDA	4900-1	563 (600-1)	4900-1½	563 (600-1½)	4900-1¾	563 (600-1¾)	
CIRCLING	5040-1 676 (700-1)	5240-1¼ 876 (900-1¼)	5400-3	1036 (1100-3)			

