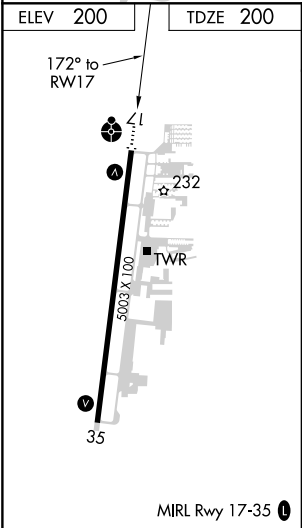
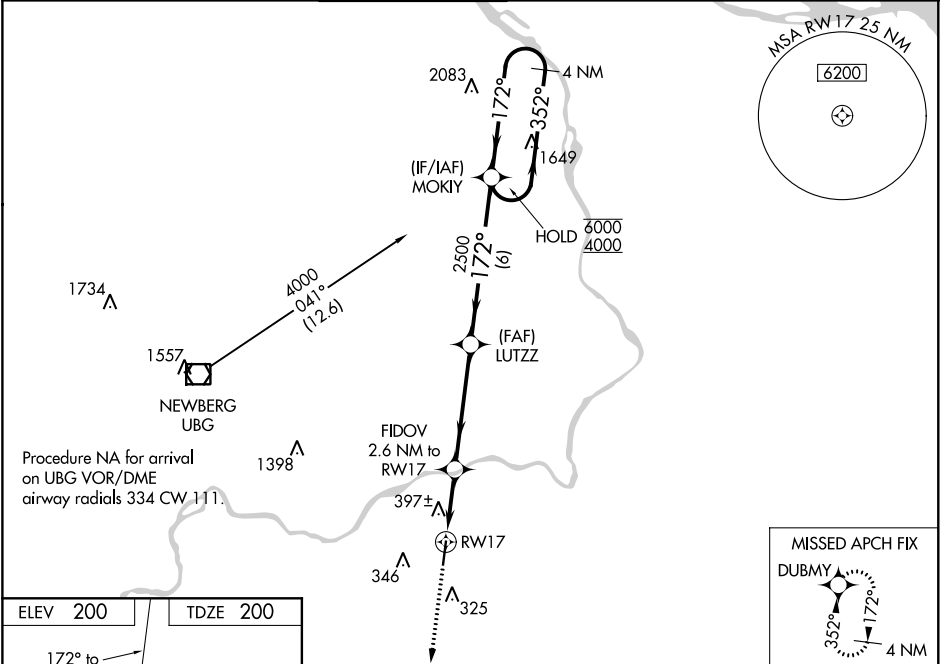


WAAS CH 70308 W17A	APP CRS 172°	Rwy Idg 5003 TDZE 200 Apt Elev 200
--	------------------------	---

RNAV (GPS) RWY 17
AURORA STATE (UAO)

RNP APCH. ▼ Rwy 17 helicopter visibility reduction below ¾ SM NA. For uncompensated Baro-VNAV systems, LNAV/VNAV NA below -6°C or above 54°C. ▲ For inop ALS, increase LNAV/VNAV Cat A/B and LNAV Cat C/D visibility to 1½ SM. Inop table does not apply to LPV and LNAV Cat A/B.	ODALS ●	MISSED APPROACH: Climb to 3900 direct DUBMY and hold, continue climb-in-hold to 3900.
---	------------	---

ATIS ★ 118.525	PORTLAND APP CON 126.0 269.175	AURORA TOWER ★ 120.35 (CTAF) 0	GND CON 119.15	CLNC DEL 119.15	PORTLAND CLNC DEL 119.95 (When tower closed)
--------------------------	--	--	--------------------------	---------------------------	---



3900	DUBMY	VGSI and RNAV glidepath not coincident (VGSI Angle 3.50/TCH 38).	MOKIY	4 NM Holding Pattern
*LNAV only	FIDOV 2.6 NM to RW17	LUTZZ 2500	172°	352°
1.1 NM to RW17	1060	2500	172°	6000 4000
1.1 1.5 NM	4.5 NM	6 NM	GP 3.00° TCH 40	
CATEGORY	A	B	C	D
LPV DA	511-7/8	311 (400-7/8)		
LNAV/VNAV DA	661-1¼	461 (500-1¼)		
LNAV MDA	660-1 460 (500-1)	660-1½ 460 (500-1½)		
CIRCLING	700-1 500 (500-1)	700-1½ 500 (500-1½)	940-2¼ 740 (800-2¼)	

NW-1, 31 DEC 2020 to 28 JAN 2021

NW-1, 31 DEC 2020 to 28 JAN 2021