

LOC I-MMV 110.9	APP CRS 218°	Rwy Idg TDZE 161 Apt Elev 163
---------------------------	------------------------	---

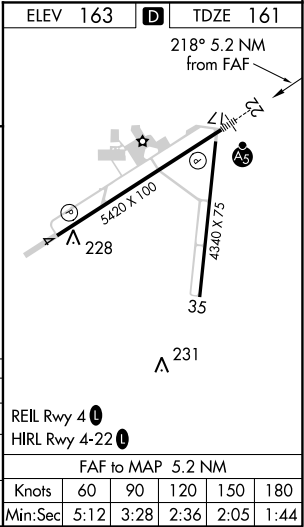
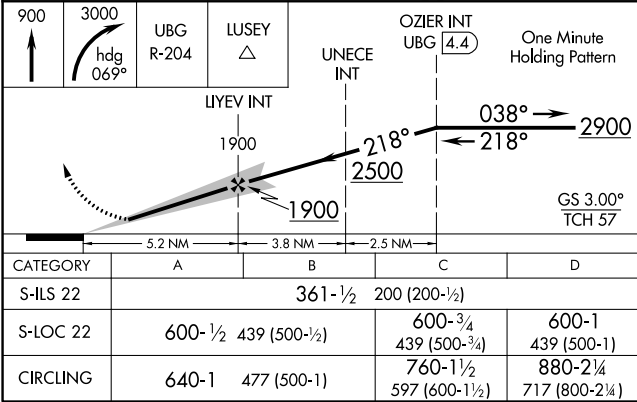
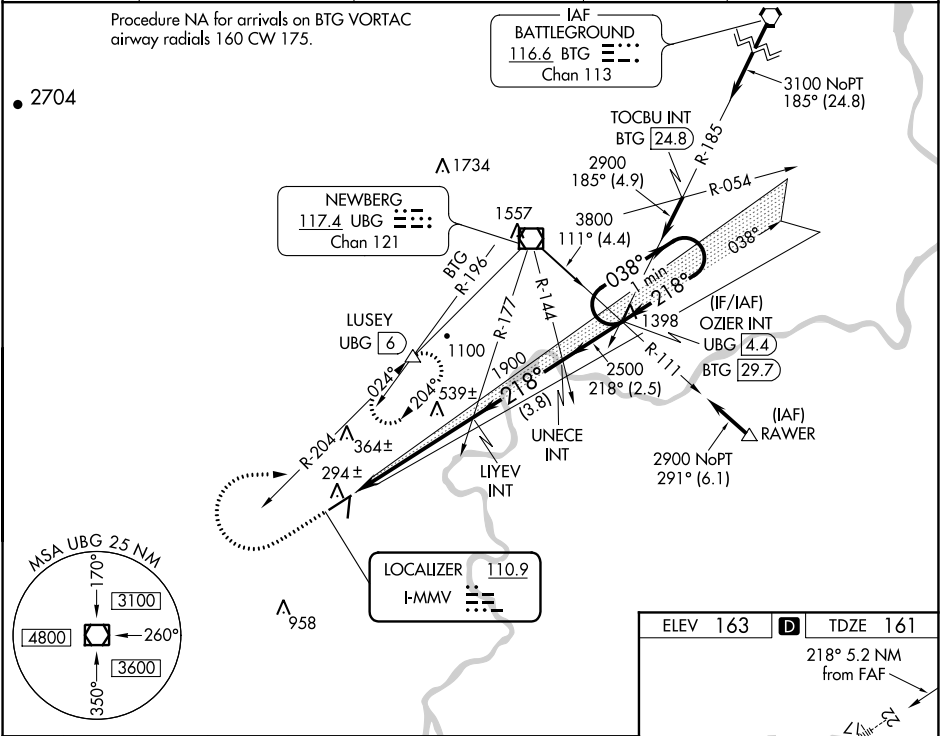
ILS or LOC RWY 22
MC MINNVILLE MUNI (MMV)

DME Required.
When local altimeter setting not received, use Aurora State altimeter setting and increase all DA and MDA 60 feet. Increase all visibility ¼ mile.

MALSR

MISSED APPROACH: Climb to 900 then climbing right turn to 3000 via heading 069° and UBG VOR/DME R-204 to LUSEY/UBG VOR/DME 6 DME and hold, continue climb-in-hold to 3000. When authorized by ATC, climb-in-hold to 6000.

ASOS 135.675	PORTLAND APP CON 126.0 284.6 (NORTH)	SEATTLE CENTER 125.8 291.7 (SOUTH)	CLNC DEL 118.35	UNICOM 123.0 (CTAF) 0
------------------------	--	--	---------------------------	---------------------------------



NW-1, 31 DEC 2020 to 28 JAN 2021

NW-1, 31 DEC 2020 to 28 JAN 2021