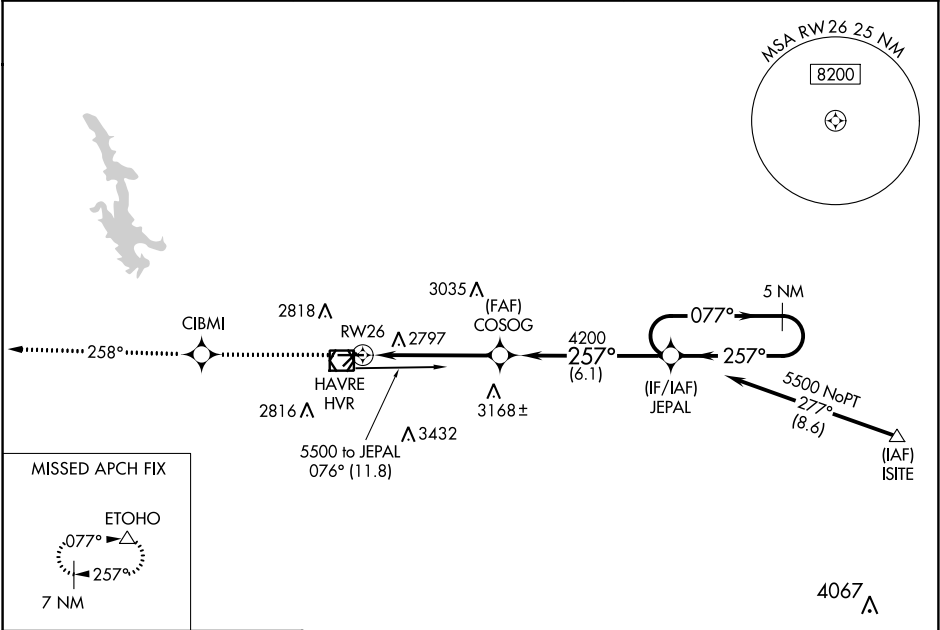


WAAS CH <b>48816</b> <b>W26A</b>	APP CRS <b>257°</b>	Rwy Idg TDZE <b>2586</b> Apt Elev <b>2591</b>
--	------------------------	---

RNAV (GPS) RWY 26  
HAVRE CITY-COUNTY (HVR)

RNP APCH. -30°C	For uncompensated Baro-VNAV systems, LNAV/VNAV NA below -20°C or above 54°C.	MISSED APPROACH: Climb to 8000 direct CIBMI and on track 258° to ETOHO and hold, continue climb-in-hold to 8000.
--------------------	---	--

ASOS <b>135.225</b>	SALT LAKE CENTER <b>133.4 285.4</b>	UNICOM <b>122.8 (CTAF) 0</b>
------------------------	--	---------------------------------



ELEV <b>2591</b>	<b>D</b>	TDZE <b>2586</b>
------------------	----------	------------------

Diagram illustrating the runway layout and dimensions:

- Runway 8 and 26: 5205 X 100
- Runway 3699 X 60
- Distance 2635
- Distance 257° to RW26
- Distance 257° to RW26

REIL Rwy 8 and 26 ①  
 MIRL Rwy 8-26  
 MIRL Rwy 3-21 ①

8000 ↑	CIBMI ✦	tr 258°	ETOHO △	JEPAL	5 NM Holding Pattern
			COSOG	077° → 5500 ← 257°	GP 3.00° TCH 38
			RW26	257°	4200
			4.9 NM	6.1 NM	
CATEGORY	A	B	C	D	
LPV DA	2836-¾		250 (300-¾)		
LNAV/ VNAV DA	3097-1¾		511 (600-1¾)		
LNAV MDA	3060-1	474 (500-1)	3060-1¼ 474 (500-1¼)	3060-1½ 474 (500-1½)	
CIRCLING	3080-1 489 (500-1)	3120-1 529 (600-1)	3120-1½ 529 (600-1½)	3180-2 589 (600-2)	