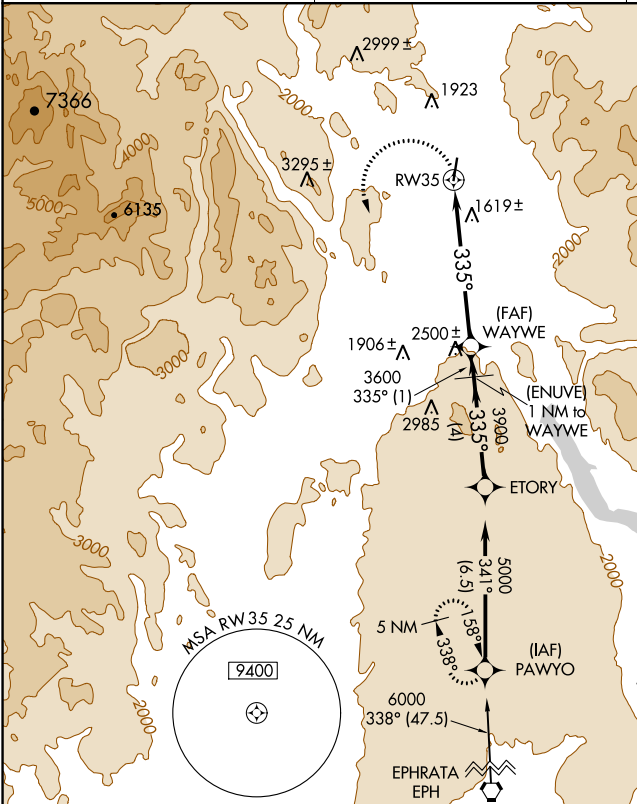


APP CRS <b>335°</b>	Rwy Idg <b>4667</b>
	TDZE <b>1299</b>
	Apt Elev <b>1301</b>

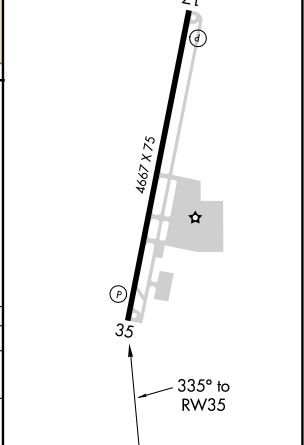
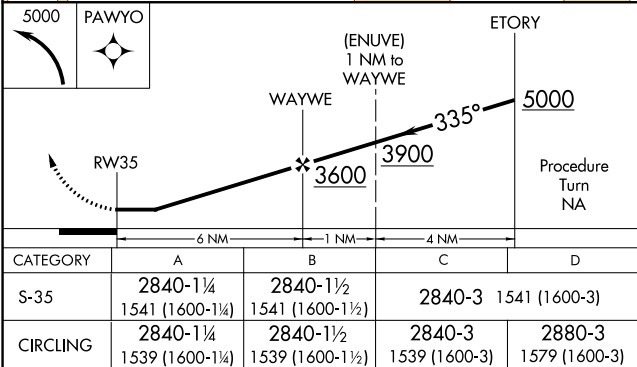
GPS RWY 35  
OMAK (OMK)

NA -15°C	MISSED APPROACH: Climbing left turn to 5000 direct PAWYO WP and hold.
-------------	---

ASOS <b>118.325</b>	SEATTLE CENTER <b>126.1 291.6</b>	UNICOM <b>122.8 (CTAF) 0</b>
------------------------	--------------------------------------	---------------------------------



ELEV 1301	TDZE 1299
REIL Rwy 17 and 35 0	
MIRL Rwy 17-35 0	



NW-1, 31 DEC 2020 to 28 JAN 2021

NW-1, 31 DEC 2020 to 28 JAN 2021