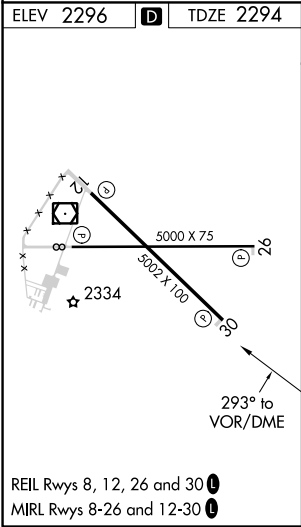
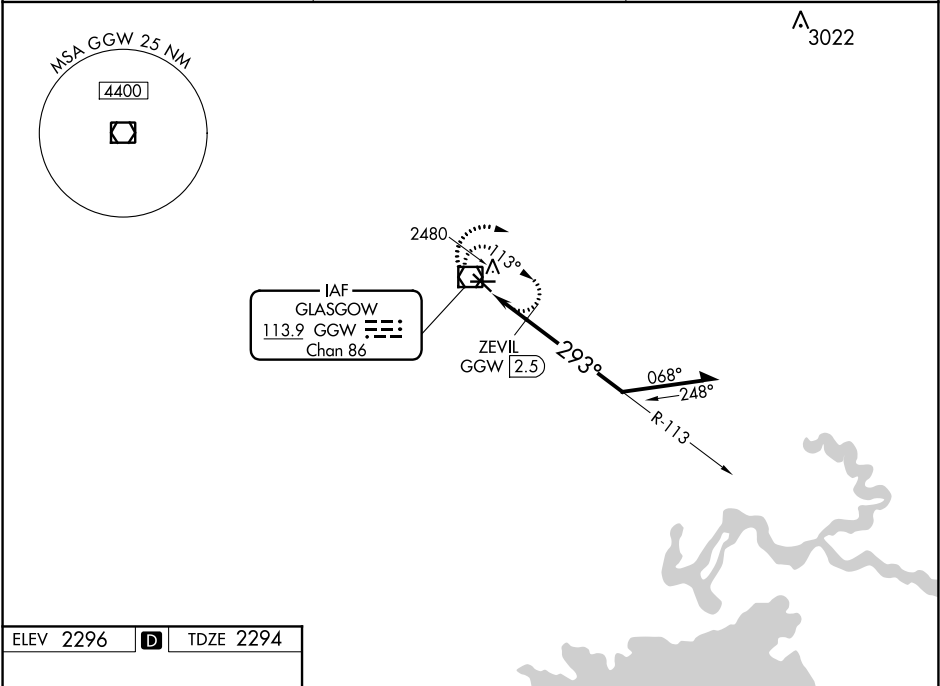


VOR/DME	GGW	APP CRS	Rwy Idg	5001
113.9		293°	TDZE	2294
Chan 86			Apt Elev	2296

VOR RWY 30

WOKAL FIELD/GLASGOW-VALLEY COUNTY (GGW)

<p>⚠ ZEVIL fix Straight-in minimums NA when using Wolf Point altimeter setting. When local altimeter setting not received, use Wolf Point altimeter setting and increase all MDA 160 feet and increase visibilities all Cats ½ SM.</p>	<p>MISSED APPROACH: Climb to 4000 in GGW VOR/DME holding pattern.</p>
<p>ASOS 135.175</p>	<p>SALT LAKE CENTER 126.85 305.2</p>
<p>UNICOM 122.8 (CTAF) 0</p>	



4000

GGW

GGW VOR/DME

Remain within 10 NM

↑

⬡

* 3040 when using Wolf Point altimeter setting.

113°

ZEVIL

GGW 2.5

293°

4000

2880*

3.18

TCH 40

2.5 NM

CATEGORY	A	B	C	D
S-30	2880-1	586 (600-1)	2880-1¾	586 (600-1¾)
CIRCLING	2880-1	584 (600-1)	2880-1¾ 584 (600-1¾)	2880-2 584 (600-2)
ZEVIL FIX MINIMUMS				
S-30	2740-1	446 (500-1)	2740-1⅜	446 (500-1⅜)
CIRCLING	2780-1	484 (500-1)	2780-1½ 484 (500-1½)	2860-2 564 (600-2)

VOR RWY 30