

VOR/DME GGW
113.9
Chan **86**

APP CRS
133°

Rwy Idg
TDZE **2294**
Apt Elev **2296**

VOR RWY 12

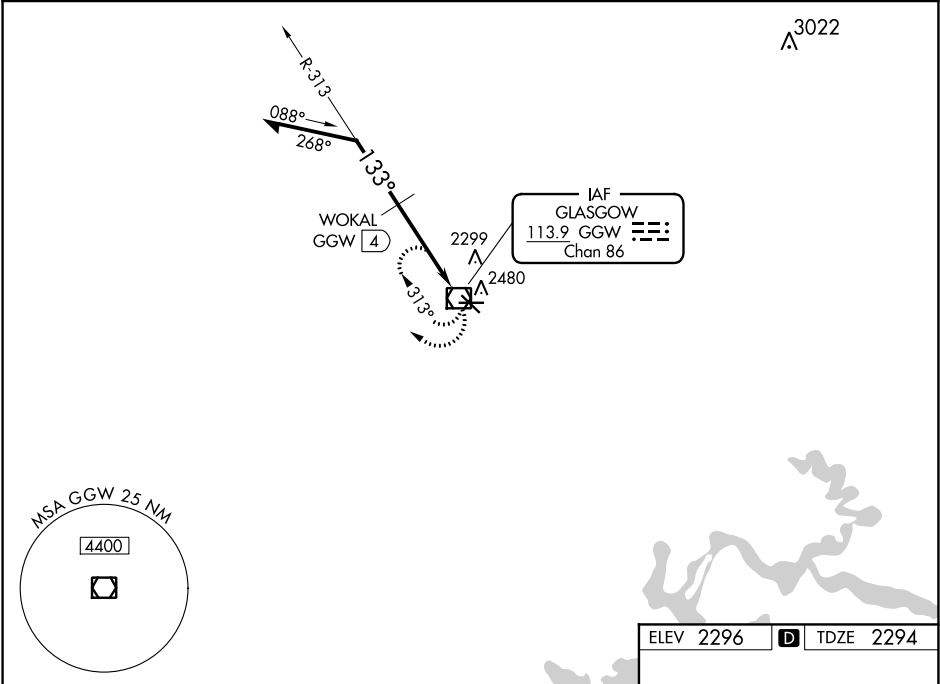
WOKAL FIELD/GLASGOW-VALLEY COUNTY (GGW)

⚠

When local altimeter setting not received, use Wolf Point altimeter setting and increase all MDA 160 feet and increase S-12 and Circling visibility Cats A/B/D ¼ SM, Cat C ½ SM and WOKAL fix mins increase all MDAs 160 feet and increase visibility Cats C/D ½ SM and Circling Cats C/D ½ SM.

MISSED APPROACH:
Climb to 4100 in GGW
VOR/DME holding pattern.

ASOS 135.175	SALT LAKE CENTER 126.85 305.2	UNICOM 122.8 (CTAF) 0
------------------------	---	---------------------------------



Remain within 10 NM

GGW VOR/DME

4100

WOKAL GGW 4

313°

133°

*3140

4 NM

*3300 when using Wolf Point altimeter settings

CATEGORY	A	B	C	D
S-12	3140-1 846 (900-1)	3140-1¼ 846 (900-1¼)	3140-2½ 846 (900-2½)	3140-2¾ 846 (900-2¾)
CIRCLING	3140-1 844 (900-1)	3140-1¼ 844 (900-1¼)	3140-2½ 844 (900-2½)	3140-2¾ 844 (900-2¾)

WOKAL FIX MINIMUMS

S-12	2700-1 406 (500-1)	2700-1¼ 406 (500-1¼)
CIRCLING	2780-1 484 (500-1)	2780-1½ 564 (600-2)

ELEV 2296

TDZE 2294

133° to VOR/DME

5000 X 75

5002 X 100

2334

REIL Rwy 8, 12, 26 and 30

MIRL Rwy 8-26 and 12-30