

WAAS CH 99620 W30A	APP CRS 303°	Rwy Idg 5001 TDZE 2294 Apt Elev 2296
--	------------------------	---

RNAV (GPS) RWY 30

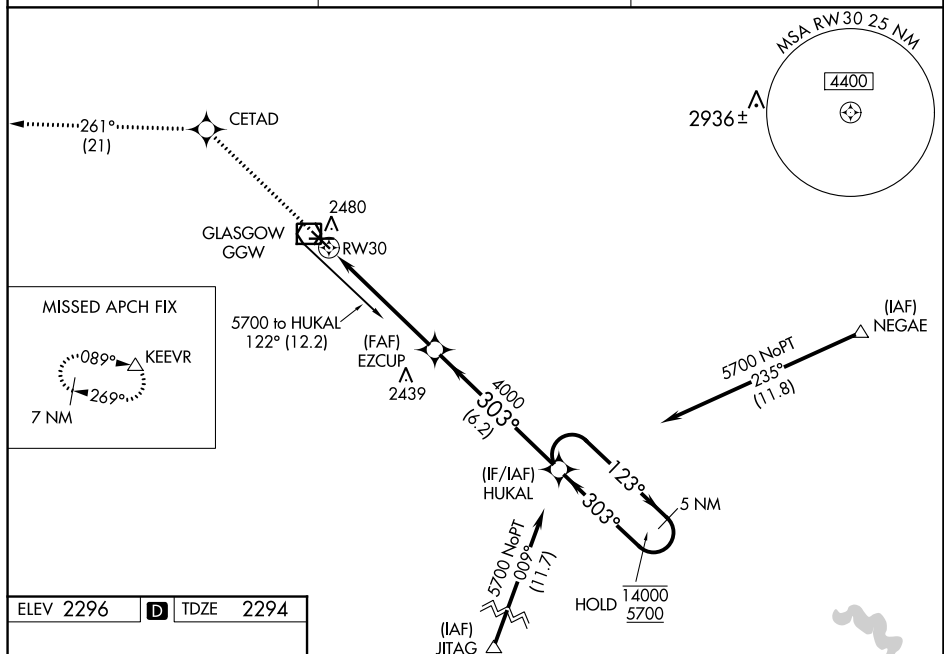
WOKAL FIELD/GLASGOW-VALLEY COUNTY (GGW)

RNP APCH.

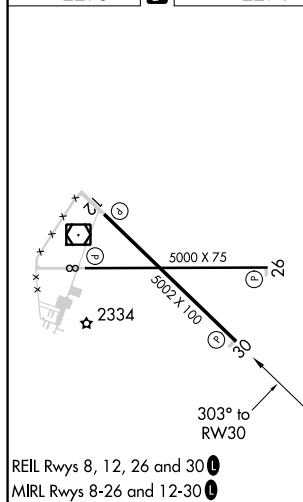
V For uncompensated Baro-VNAV systems, LNAV-VNAV NA below -14°C or above 54°C. When local altimeter setting not received, use Wolf Point altimeter setting and increase all DA 141 feet and all MDA 160 feet and increase LPV visibility all Cats $\frac{3}{8}$ SM, LNAV/VNAV visibility all Cats $\frac{1}{2}$ SM, LNAV visibility Cats C and D $\frac{1}{2}$ mile, and Circling visibility Cats C and D $\frac{1}{4}$ SM. Baro-VNAV and VDP NA when using Wolf Point altimeter setting.

MISSED APPROACH: Climb to 6500 direct CETAD and on track 261° to KEEVR and hold.

ASOS 135.175	SALT LAKE CENTER 126.85 305.2	UNICOM 122.8 (CTAF) 0
------------------------	---	---------------------------------



ELEV 2296	D	TDZE 2294
-----------	----------	-----------



6500 ↑	CETAD ✱	tr 261° △	KEEVR △	HUKAL 5 NM Holding Pattern																									
* LNAV only																													
<table border="1"> <thead> <tr> <th>CATEGORY</th> <th>A</th> <th>B</th> <th>C</th> <th>D</th> </tr> </thead> <tbody> <tr> <td>LPV DA</td> <td colspan="2">2494-³/₄</td> <td colspan="2">200 (200-³/₄)</td> </tr> <tr> <td>LNAV/ VNAV DA</td> <td colspan="2">2587-1</td> <td colspan="2">293 (300-1)</td> </tr> <tr> <td>LNAV MDA</td> <td>2700-1</td> <td>406 (500-1)</td> <td>2700-1¹/₈</td> <td>406 (500-1¹/₈)</td> </tr> <tr> <td>CIRCLING</td> <td>2780-1</td> <td>484 (500-1)</td> <td>2780-1¹/₂ 484 (500-1¹/₂)</td> <td>2860-2 564 (600-2)</td> </tr> </tbody> </table>					CATEGORY	A	B	C	D	LPV DA	2494- ³ / ₄		200 (200- ³ / ₄)		LNAV/ VNAV DA	2587-1		293 (300-1)		LNAV MDA	2700-1	406 (500-1)	2700-1 ¹ / ₈	406 (500-1 ¹ / ₈)	CIRCLING	2780-1	484 (500-1)	2780-1 ¹ / ₂ 484 (500-1 ¹ / ₂)	2860-2 564 (600-2)
CATEGORY	A	B	C	D																									
LPV DA	2494- ³ / ₄		200 (200- ³ / ₄)																										
LNAV/ VNAV DA	2587-1		293 (300-1)																										
LNAV MDA	2700-1	406 (500-1)	2700-1 ¹ / ₈	406 (500-1 ¹ / ₈)																									
CIRCLING	2780-1	484 (500-1)	2780-1 ¹ / ₂ 484 (500-1 ¹ / ₂)	2860-2 564 (600-2)																									