

WAAS CH <b>69630</b> <b>W05A</b>	APP CRS <b>050°</b>	Rwy Idg TDZE <b>3427</b> Apt Elev <b>3443</b>
--	------------------------	---

RNAV (GPS) RWY 5

SHELBY (SBX)

▼

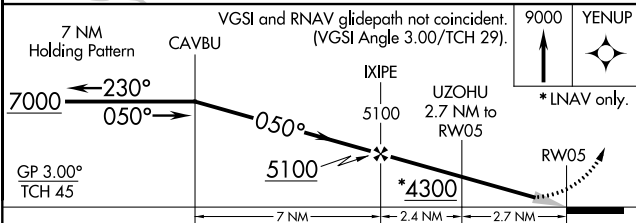
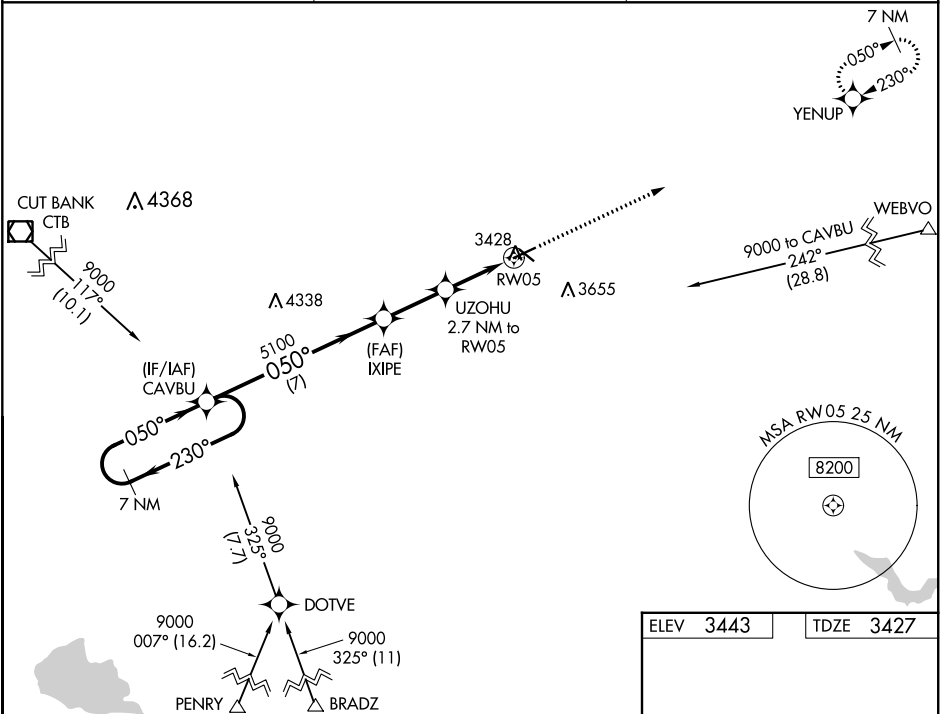
▲ NA

❄ -31°C

Night landing: Rwy 23 NA. Baro-VNAV NA. DME/DME RNP-0.3 NA. Use Cut Bank altimeter setting, if not received use Great Falls altimeter setting and increase all DA 81 feet and all MDA 100 feet; increase LPV all Cats visibility ¼ mile, LNAV/VNAV all Cats visibility ⅓ mile, LNAV Cats C/D and Circling Cat C/D visibilities ¼ mile.

MISSED APPROACH: Climb to 9000 direct YENUP and hold, continue climb-in-hold to 9000.

CTB ASOS <b>119.025</b>	SALT LAKE CITY CENTER <b>133.4 285.4</b>	UNICOM <b>122.8 (CTAF) 0</b>
----------------------------	---	---------------------------------



ELEV **3443**

TDZE **3427**

Diagram of runway 5 showing dimensions: 5005 x 75 feet, 3701 x 60 feet. Approach angles: 050° to RW05, 0.5% UP.

MIRL Rwy 5-23 and 11-29 0

CATEGORY	A	B	C	D
LPV DA		3733-1	306 (300-1)	
LNAV/ VNAV DA		3783-1 ⅓	356 (400-1 ⅓)	
LNAV MDA	3800-1	373 (400-1)	3800-1 ⅓	373 (400-1 ⅓)
CIRCLING	4020-1 577 (600-1)	4080-1 637 (700-1)	4100-1 ¾ 657 (700-1 ¾)	4220-2 ½ 777 (800-2 ½)