

WAAS CH 78026 W23A	APP CRS 230°	Rwy Idg TDZE 3443 Apt Elev 3443
----------------------------------------	------------------------	-----------------------------------------------------

RNAV (GPS) RWY 23
SHELBY (SBX)

▼

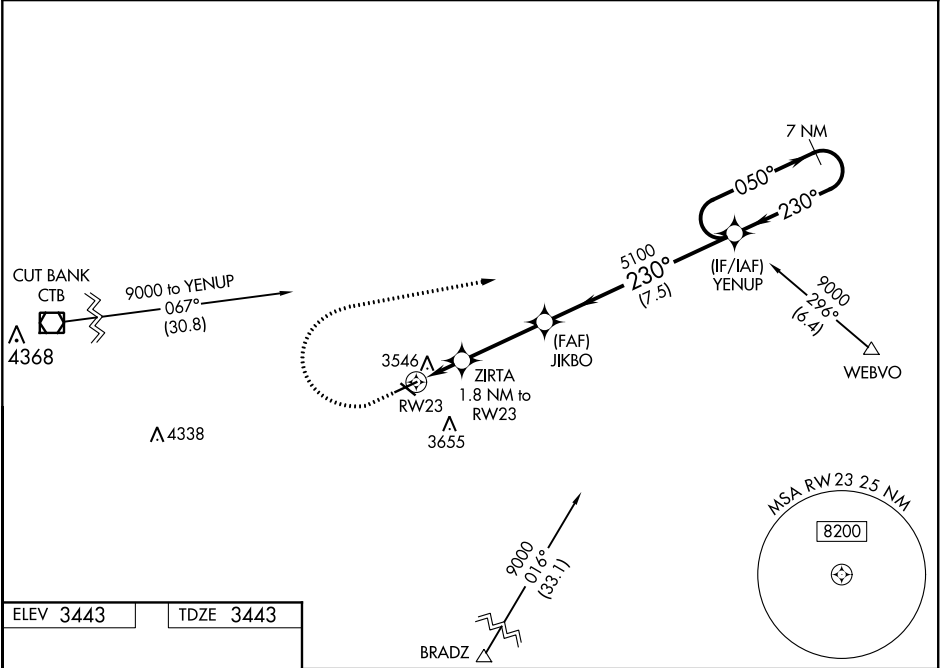
NA

❄ -31°C

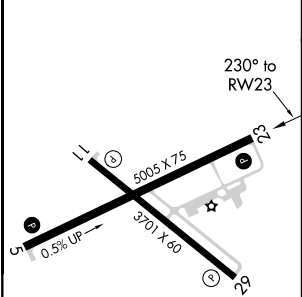
Baro-VNAV NA. Rwy 23 helicopter visibility reduction below 1 SM NA. DME/DME RNP-0.3 NA. Use Cut Bank altimeter setting, if not received use Great Falls altimeter setting and increase all DA 81 feet and all MDA 100 feet; increase LPV all Cats visibility ⅜ mile, LNAV/VNAV all Cats, LNAV Cats C/D, Circling Cats C/D visibilities ¼ mile. Straight-in Rwy 23 NA at night. Circling Rwy 23 NA at night.

MISSED APPROACH: Climb to 4300 then climbing right turn to 9000 direct YENUP and hold, continue climb-in-hold to 9000.

CTB ASOS 119.025	SALT LAKE CITY CENTER 133.4 285.4	UNICOM 122.8 (CTAF) 0
----------------------------	---------------------------------------------	---------------------------------



ELEV 3443	TDZE 3443
------------------	------------------



*LNAV only.				
RW23 1.8 NM 3.3 NM 7.5 NM				
CATEGORY	A	B	C	D
LPV DA	3799-1 ⅛		356 (400-1 ⅛)	
LNAV/VNAV DA	3813-1 ¼		370 (400-1 ¼)	
LNAV MDA	3920-1	477 (500-1)	3920-1 ⅜	477 (500-1 ⅜)
CIRCLING	4020-1 577 (600-1)	4080-1 637 (700-1)	4100-1 ¾ 657 (700-1 ¾)	4220-2 ½ 777 (800-2 ½)

NW-1, 31 DEC 2020 to 28 JAN 2021

NW-1, 31 DEC 2020 to 28 JAN 2021