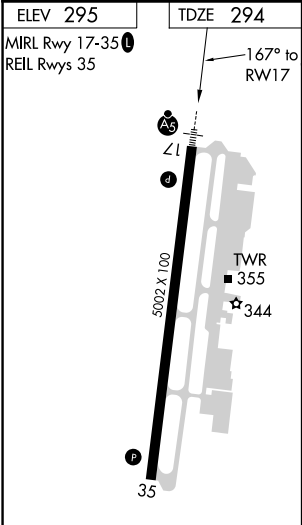
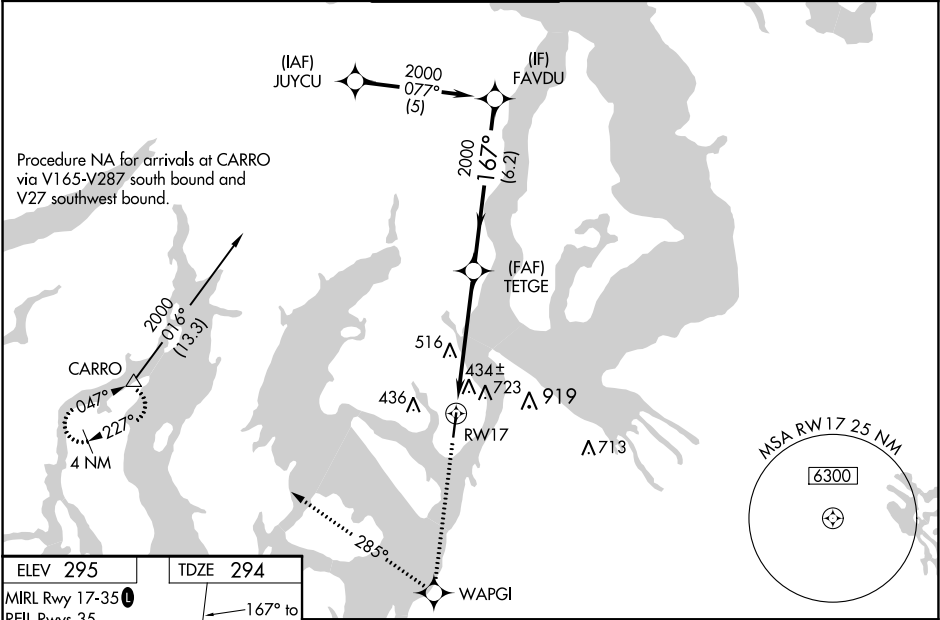


WAAS CH <b>82608</b> <b>W17A</b>	APP CRS <b>167°</b>	Rwy ldg TDZE <b>294</b> Apt Elev <b>295</b>	<b>5002</b> <b>294</b> <b>295</b>	<b>RNAV (GPS) RWY 17</b> TACOMA NARROWS (TIW)
--	------------------------	---	---	--

<b>RNP APCH.</b> ▼ VDP NA with McChord Field altimeter setting. For inoperative MALS, increase LPV all Cats visibility to 1 1/8 mile. Circling NA east of Rwy 17/35. ▲ Baro-VNAV NA when using McChord Field altimeter setting. For uncompensated Baro-VNAV systems, LNAV/VNAV NA below -15°C (5°F) or above 48°C (118°F). When local altimeter setting not received, use McChord Field altimeter setting and increase all DA 25 feet, all MDA 40 feet, and increase LPV all Cats visibility 1/8 mile.	<b>MALS</b> A5 MISSED APPROACH: Climb to 4000 direct WAPGI and right turn via 285° track to CARRO and hold, continue climb-in-hold to 4000.
--	---

ATIS <b>124.05</b>	SEATTLE APP CON <b>120.1 290.9</b>	<b>TACOMA TOWER ★</b> <b>118.5 (CTAF) 0 253.5</b>	GND CON <b>121.8</b>	UNICOM <b>122.95</b>
-----------------------	---------------------------------------	--	-------------------------	-------------------------



4000	WAPGI	tr 285°	CARRO	TETGE	FAVDU	Procedure Turn NA
* LNAV only. * 2 NM to RWY 17						
RWY 17 2 NM 3.1 NM 6.2 NM						
GP 3.00° TCH 52						
CATEGORY	A	B	C	D		
LPV DA	638-5/8 344 (400-5/8)					
LNAV/VNAV DA	992-2 698 (700-2)					
LNAV MDA	980-1/2 686 (700-1/2)		980-1/2 686 (700-1/2)			
CIRCLING	980-1 685 (700-1)		980-2 685 (700-2)		980-2 1/4 685 (700-2 1/4)	