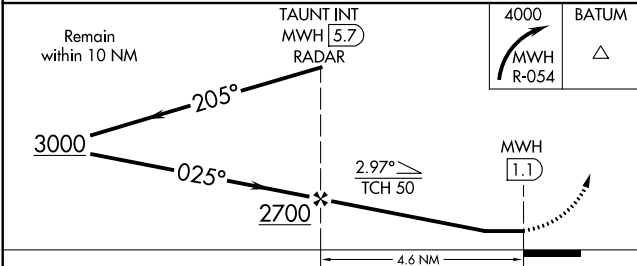
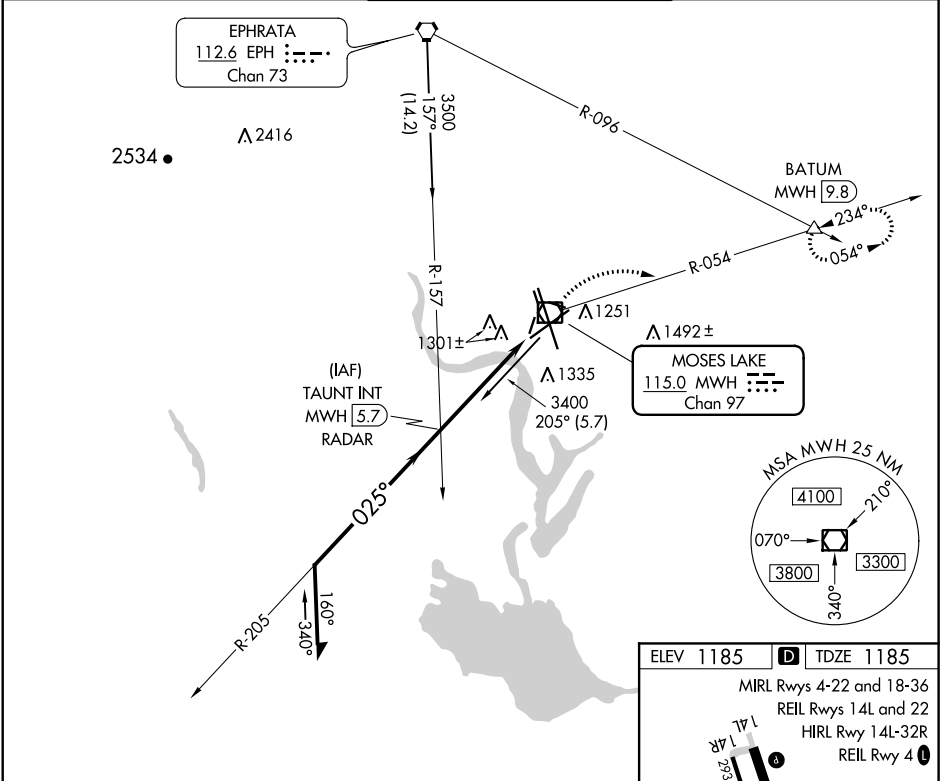


VOR/DME MWH	APP CRS	Rwy Idg	10000
115.0	025°	TDZE	1185
Chan 97		Apt Elev	1185

VOR RWY 4  
GRANT COUNTY INTL (MWH)

**MISSED APPROACH:** Climbing right turn to 4000 via MWH R-054 to BATUM INT/MWH 9.8 DME and hold.

ATIS 119.05	GRANT COUNTY APP CON ★ 126.4 379.95	GRANT COUNTY TOWER ★ 118.25 (CTAF) 257.8 (EAST) 128.0 257.8 (WEST)	GND CON 121.9	UNICOM 122.95
----------------	--	--	------------------	------------------



ELEV 1185 TDZE 1185

MIRL Rwy 4-22 and 18-36  
REIL Rwy 14L and 22  
HIRL Rwy 14L-32R  
REIL Rwy 4

FAF to MAP 4.6 NM

Knots	60	90	120	150	180
Min:Sec	4:36	3:04	2:18	1:50	1:32

NW-1, 31 DEC 2020 to 28 JAN 2021

NW-1, 31 DEC 2020 to 28 JAN 2021